

CATALOGUE 2017

FUN



WHEN LIFE CALLS  
BE READY



1933



In **1933** Sol Koffler founded the American Tourister luggage company in Providence (Rhode Island), USA.

1965



**1965**  
American Tourister was the first company to "flight test" their bags with flight attendants from major airlines.

1985



**1985**  
Softside luggage is completing the existing hardside offer - Durable cases that could withstand even the toughest quality test, a gorilla.

2014



**2014**  
American Tourister is one of the leading luggage brands, trusted all over the world.

2016



**2016**  
Pan-European advertising campaign with our hero collections to reinforce American Tourister's position as the 2nd biggest luggage brand worldwide.

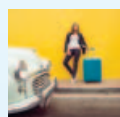
## THE BRAND TODAY

**American Tourister** is the 2nd biggest luggage brand in the world with a presence in more than 90 countries worldwide.

Today we offer a wide selection of qualitative youthful, vibrant and reliable luggage at an affordable price. Embedded with distinctive high quality traits, the **American Tourister** collections combine style & practicality and cover a wide selection of travel luggage, ideal for your next leisure travel.

# CONTENTS

## HARDSIDE



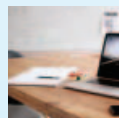
	page		
	6	LOCK'N'ROLL	6057 06G
	8	AIR FORCE 1	6610 18G
	10	AIR FORCE 1 - GRADIENT	6610 18G
NEW	12	MWM SUMMER FUN	7865 43G
NEW	14	SOUNDBOX	7675 32G
	16	SKYTRACER	6873 22G
	18	BON AIR	2547 85A
	20	WAVEBREAKER	6588 15G
NEW	22	TRACKLITE	7741 34G
NEW	24	ZIGGZAGG	7062 23G
NEW	26	TECHNUM	7786 37G

## CASUAL



	page		
	50	URBAN GROOVE	7091 24G
	52	ROAD QUEST	6589 16G

## BUSINESS



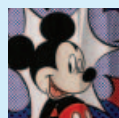
	page		
NEW	56	AT WORK	7721 33G
	58	CITY DRIFT	7259 28G

## SOFTSIDE



	page		
	30	HEROLITE	7231 26G
	32	HEROLITE LIFESTYLE	7231 26G
	34	SUMMER VOYAGER	7309 29G
NEW	36	JOYRIDE	7776 36G
	38	FUNSHINE	6743 20G
	40	SUNBEAM	6576 12G
	42	PIKES PEAK	6583 14G
NEW	44	LITEWING	7816 38G

## DISNEY



	page		
NEW	62	WAVEBREAKER DISNEY	7321 31C
NEW	64	WAVEBREAKER STAR WARS	7321 31C
NEW	66	WAVEBREAKER MARVEL	7321 31C
	68	DISNEY LEGENDS - TEENS/ADULTS	3450 19C
	70	STAR WARS LEGENDS - TEENS/ADULTS	3496 22C
	71	MARVEL LEGENDS - TEENS/ADULTS	3451 21C

## TRAVEL TRENDS



	page
	46 TRAVEL TRENDS
	47 READY TO BOARD

## GENERAL INFO



	page
	72 CABIN AIRLINE DIMENSIONS
	74 POINT OF SALE MATERIAL
	76 AMERICAN TOURISTER WORLDWIDE
	78 SHOP IN THE SHOP
	79 GENERAL INFO, SYMBOLS & SOCIAL MEDIA





# HARD SIDE

# LOCK'N'ROLL™



**5** YEAR WARRANTY

Ready to “Lock’n’Roll” to your next destination with this case that is made in Europe? Curved lines, paired with a unique mix of texture and sporty colour accents give Lock’n’Roll a dynamic appearance everywhere you go. Thanks to **American Tourister’s** injection molding experience and innovative engineering, this polypropylene collection represents the perfect synergy of strength and lightness.

Discover one of our bestseller collections and its bright colour palette.

- Made in Europe
- Made from strong and resistant polypropylene material
- Superior lightness & maximum volume thanks to cubic shape
- Smooth rolling double wheels
- Cross ribbons in bottom compartment with zipped lined divider pad





**68601 (06G\*003): SPINNER 55**  
40 x 55 x 20 || 37.0 L - 2.7 KG



**66983 (06G\*001): SPINNER 69**  
49 x 69 x 29 || 85.0 L - 4.2 KG



**66984 (06G\*002): SPINNER 75**  
52 x 75 x 31 || 106.0 L - 4.6 KG



**\*10**  
Formula Red  
0507



**\*31**  
Nocturne Blue  
2375



**\*08**  
Volt Grey  
5198



**\*19**  
Jet Black  
1465



**\*11**  
Skydiver Blue  
2608



**\*06**  
Sunshine Yellow  
1844



**\*80**  
Summer Pink  
4495

# AIR FORCE 1™

**3** YEAR  
WARRANTY

Ready to reach out for the sky? Our Air Force 1 collection offers all the features that travellers need to rest free from worry and enjoy travelling around the world. Packing a lot won't be a problem anymore, thanks to additional expandability on Spinners® 66 and 76 offering the flexibility to pack more when needed. A contemporary rhomboid shape gives the range a dynamic appearance and design. Choose one of the 5 sportive colours and get away on your next big adventure!

- Made from 100% polycarbonate with textured finishing
- Fixed 3-digit recessed TSA Lock®\*
- Voluminous and flexible thanks to the expandability feature
- Ergonomic top and side carry handle



\*TSA Lock is a registered Community Trademark of Travel Sentry Inc.





**74401 (18G\*001): SPINNER 55**  
40 x 55 x 20 || 34.0 L - 2.6 KG



**74403 (18G\*002): SPINNER 66 EXP**  
46 x 66 x 28/32 || 69/81 L - 3.6 KG



**74404 (18G\*003): SPINNER 76 EXP**  
50 x 76 x 29/34 || 96.5/111 L - 4.1 KG



**74406 (18G\*004): SPINNER 81**  
55 x 81 x 33 || 117.0 L - 4.3 KG



Not available in 1839 (\*06) Sunny Yellow  
and 4842 (\*31) Aero Turquoise



**\*00**  
Flame Red  
0501



**\*09**  
Galaxy Black  
2576



**\*31**  
Aero Turquoise  
4842



**\*06**  
Sunny Yellow  
1839



**\*01**  
Insignia Blue  
4424

# AIR FORCE 1 - GRADIENT

**3** YEAR  
WARRANTY

One of the hot topics in fashion and styling is the Ombré effect, which describes the gradual blending of one colour hue to another, usually moving tints and shades from light to dark. **American Tourister** is including this interesting design element as part of the assortment and surprises us again with this colourful and affordable suitcase range. Based on the great looking Air Force 1 collection, this special execution is made of polycarbonate combined with a printed gradient film, providing a bright finish, easy to recognise on any luggage belt. Features like expandability, smooth rolling double wheels and padded carrying handles, known from the standard Air Force 1 collection, are part of this colourful package. Choose one of the 3 gradient colours and get away on your next adventure!

- Made from 100% polycarbonate with shiny finishing
- Fixed 3-digit recessed TSA Lock
- Voluminous and flexible thanks to the expandability feature
- Ergonomic top and side carry handle



# AIR FORCE 1 - GRADIENT 6610 18G

HARD  
SIDE



74409 (18G\*101): SPINNER 55 GRAD.  
40 x 55 x 20 || 34.0 L - 2.6 KG





74410 (18G\*102): SPIN. 66 EXP GRAD.  
46 x 66 x 28/32 || 69/81 L - 3.6 KG



74411 (18G\*103): SPIN. 76 EXP GRAD.  
50 x 76 x 29/34 || 96.5/111 L - 4.1 KG



 \*61  
Gradient Blue  
5270

 \*60  
Gradient Pink  
5271

 \*66  
Gradient Yellow  
5272

# MWM SUMMER FUN™

NEW

POS

3 YEAR WARRANTY

*American Tourister* is joining forces with the internationally known design studio MWM Graphics to create a unique and limited range of bags and suitcases. Based on the successful Air Force 1 design, MWM Graphics' iconic and digital abstract 'Vectorfunk' design has been combined with inspiring, travel related vocabulary to indulge all global jet-setters. The bright and colourful design is ideal to be spotted on every luggage belt and puts a smile on your face every time you travel.

- Limited Edition
- Iconic MWM Graphics' Vectorfunk design
- Personalised interior
- Expandability and double wheels for more comfort



# MWM SUMMER FUN 7865 43G

**HARD  
SIDE**



**90365 (43G\*005): SPORTSBAG**  
50 x 31 x 29 || 46.0 L - 0.5 KG



2 year warranty



**90366 (43G\*006): LAPT. BACKPACK 15.6"**  
30 x 44 x 21 || 21.5 L - 0.5 KG

\*\* 26 x 37,5 x 3,5  
\*\*\* 19 x 27 x 1,7

☐ 25,7 cm/10.1"    ↙ 39.6 cm/15.6"



2 year warranty



**90364 (43G\*004): SPINNER 55**  
40 x 55 x 20 || 42.0 L - 1.5 KG



**90356 (43G\*001): SPINNER 55**  
40 x 55 x 20 || 34.0 L - 2.6 KG



**90357 (43G\*002): SPINNER 66 EXP**  
46 x 66 x 28/32 || 69/81 L - 3.6 KG



**90358 (43G\*003): SPINNER 76 EXP**  
50 x 76 x 29/34 || 96.5/111 L - 4.1 KG



\*\* Maximum laptop size  
\*\*\* Maximum tablet size



**\*02**  
Vectorfunk  
6386

# SOUNDBOX™

NEW

POS

3 YEAR WARRANTY

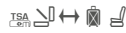
Inspired by the beat of the world, SoundBox is our new polypropylene collection, featuring an impactful concentric circle design that takes inspiration from retro vinyl records. It is the first **American Tourister** zipped polypropylene case with expandability, providing the flexibility to increase your packing space to store the most exotic souvenirs from around the world. Especially designed for funky music lovers and travel enthusiasts, the line is available in 6 bright and playful colours. Feel the sound and travel light with our new SoundBox collection.

- First expandable **American Tourister** zipped polypropylene case
- Expandability feature offers maximum capacity
- Light and resistant thanks to the polypropylene material
- Fixed 3-digit recessed TSA Lock
- Double wheels for smooth rolling comfort





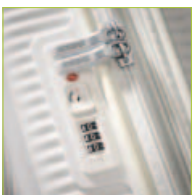
88472 (32G\*001): SPINNER 55 EXP  
40 x 55 x 20/23 || 35.5/41 L - 2.6 KG



88473 (32G\*002): SPINNER 67 EXP  
46,5 x 67 x 29/32 || 71.5/81 L - 3.7 KG



88474 (32G\*003): SPINNER 77 EXP  
51,5 x 77 x 29,5/32,5 || 97/110 L - 4.2 KG



**\*09**  
Bass Black  
1027



**\*05**  
Pure White  
2343



**\*90**  
Lightning Pink  
5502



**\*41**  
Midnight Navy  
1552



**\*01**  
Summer Blue  
4497



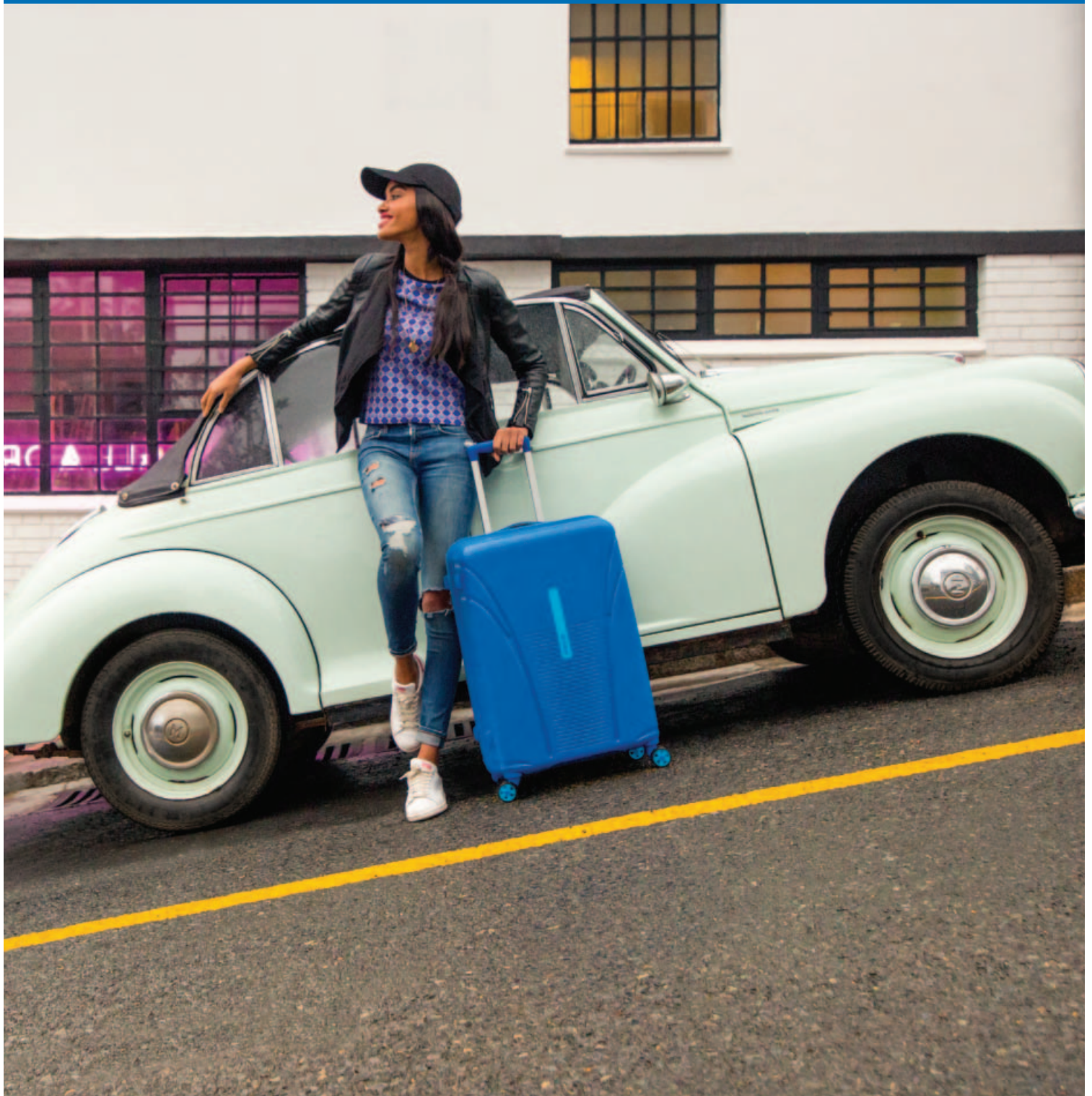
**\*74**  
Tropical Lime  
6263

# SKYTRACER™

**3** YEAR  
WARRANTY

Skytracer is the next generation of zipped polypropylene cases which combines extreme strength with superior lightness. The dynamic design, inspired by latest technology trends, combines a protective matt texture with shiny curved lines. Its appealing look is accentuated by contemporary dégradé lines on the front, while vivid and sportive colours make this collection an eye-catcher in every airport and hotel lobby. Functional features such as double wheels and recessed TSA Lock ensure you are prepared for every adventure to come.

- Made from 100% polypropylene material
- Comfortable soft touch top and side carry handle
- Fixed 3-digit recessed TSA Lock
- Double wheels for smooth rolling comfort
- Cross ribbons in top and bottom compartment







76526 (22G\*001): SPINNER 55  
40 x 55 x 20 || 32.0 L - 2.6 KG



76527 (22G\*002): SPINNER 68  
46.5 x 68 x 26 || 62.0 L - 3.4 KG



76528 (22G\*003): SPINNER 77  
50.5 x 77.5 x 30 || 94.0 L - 4.3 KG



76529 (22G\*004): SPINNER 82\*  
55 x 82 x 34 || 120.0 L - 4.8 KG



\* Not available in 2048 (\*06) Saffron Yellow, 4420 (\*04) Spring Green and 5502 (\*90) Lightning Pink



**\*00**  
Formula Red  
0507

**\*08**  
Dark Slate  
1269

**\*06**  
Saffron Yellow  
2048

**\*04**  
Spring Green  
4420

**\*01**  
Highline Blue  
5275

**\*90**  
Lightning Pink  
5502

# BON AIR™

POS

Our best-selling hardside collection comes in 4 brand-new, candy colours for 2017! Inspired by the colours of macarons and ice cream – the new spring/summer colour palette offers soft pastel tones, giving our Bon Air collection a contemporary and fashionable touch.

- Extremely strong 100% polypropylene zipped suitcase – now available in 9 colours
- Super lightweight luggage thanks to innovative design and engineering
- Fixed 3-digit TSA Lock for added security
- Large volume and great organisation with multiple pockets and fixation straps
- 360° Spinner wheels for smooth rolling comfort





**59422 (85A\*001): SPINNER S STRICT**  
40 x 55 x 20 || 31.5 L - 2.5 KG



**59423 (85A\*002): SPINNER M**  
46 x 66 x 25.5 || 57.5 L - 3.4 KG



**59424 (85A\*003): SPINNER L**  
54 x 75 x 29 || 91.0 L - 4.2 KG



**\*70** NEW  
Fresh Pink  
0508

**\*14** NEW  
Mint Green  
1562

**\*02** NEW  
Porcelain Blue  
1712

**\*12** NEW  
Lilac  
1954

**\*06**  
Solar Yellow  
0624

**\*09**  
Black  
1041

**\*41**  
Midnight Navy  
1552

**\*05**  
White  
1908

**\*31**  
Deep Turquoise  
4517

# WAVEBREAKER™

**3** YEAR  
WARRANTY

Inspired by the freedom of travelling, WaveBreaker features a dynamic and contemporary design inspired by nature, with gradually fading lines on the front panel. The collection, enhanced by its dotted texture, helps to protect the surface against scratches. The rich looking double wheels make travelling easy and provide a smooth rolling comfort. Enjoy our *American Tourister* collection everywhere you go!

- Fixed 3-digit TSA Lock
- Cross ribbons, zipped divider and apron pocket allow easy storing
- Unique design with textured surface helping to protect against scratches



# WAVEBREAKER 6588 15G

HARD  
SIDE



74133 (15G\*001): SPINNER 55+  
40 x 55 x 20 || 36.0 L - 2.6 KG



74136 (15G\*004): 2 PC SET A  
contains  
SPINNER 55  
40 x 55 x 20 || 36.0 L - 2.6 KG  
SPINNER 77  
52 x 77 x 29 || 96.0 L - 4.2 KG



74137 (15G\*005): 3 PC SET A  
contains  
SPINNER 55  
40 x 55 x 20 || 36.0 L - 2.6 KG  
SPINNER 67  
47 x 67 x 26 || 64.0 L - 3.6 KG  
SPINNER 77  
52 x 77 x 29 || 96.0 L - 4.2 KG



\* Available individually and in sets 2 PC Set A & 3 PC Set A



**\*90**  
Hot Lips Pink  
B198

**\*28**  
Nightshade  
0576

**\*06**  
Sunny Yellow  
1839

**\*21**  
Summer Sky  
2302

**\*01**  
Nautical Blue  
4436

# TRACKLITE™

NEW

**3** YEAR  
WARRANTY

Tracklite takes inspiration from the latest trends in industrial design, to create an appealing and highly commercial suitcase collection characterised by vertical faded lines. The range offers maximum capacity thanks to its expandability feature offering a best in class value for money ratio. Follow the adventure track and choose one of the 4 colours!

- Expandability feature on Spinner 67 and 78
- Texture provides more resistance against scratches
- Fixed 3-dial TSA Lock on Spinner 67 and 78
- Double wheels for smooth rolling comfort





**88742 (34G\*001): SPINNER 55**  
40 x 55 x 20 || 34.0 L - 2.6 KG



**88745 (34G\*002): SPINNER 67 EXP**  
44.5 x 67 x 27/31 || 71/82 L - 3.8 KG



**88752 (34G\*003): SPINNER 78 EXP**  
50 x 78 x 30/34 || 105/120 L - 4.4 KG



Only TSA Lock on Spinner 67 & Spinner 78



**\*00**  
Flame Red  
0501

**\*08**  
Dark Slate  
1269

**\*01**  
Sky Blue  
1809

**\*74**  
Sunny Lime  
1838

# ZIGGZAGG™

## NEW

### 3 YEAR WARRANTY

The stylish and dynamic zigzag pattern has been the inspiration for our latest hardside collection, giving ZiggZagg its characteristic and impactful identity. Made from polycarbonate, ZiggZagg comes in a variety of bright and fashionable colours while the elegant texture offers extra protection against scratches. Follow the zigzag trend and move forward to your next great adventure!

- Made from polycarbonate
- Fixed 3-digit recessed TSA Lock on all sizes
- Ergonomic carry handles and double wheels for smooth rolling
- Elastic cross ribbons







78552 (23G\*001): SPINNER 55  
40 x 55 x 20 || 32.5 L - 2.6 KG



78553 (23G\*002): SPINNER 67  
47 x 67 x 26 || 60.5 L - 3.1 KG



78554 (23G\*003): SPINNER 77  
52.5 x 77 x 28.5 || 91.5 L - 4.0 KG



**\*16**  
Solar Yellow  
0624

**\*21**  
Spring Blue  
1823

**\*18**  
Titanium  
1864

**\*11**  
Orion Blue  
2610

**\*01**  
Petrol  
4828

# TECHNUM™

## NEW

### 3 YEAR WARRANTY

Welcome Globetrotters, we have the perfect suitcase for you! Technum is the new **American Tourister** collection that is especially made for you – offering many comfortable features to make travelling around the globe easier: expandability provides additional packing space when needed, while an enriched interior organisation keeps your belongings neat and in place. Be ready to always travel in style by choosing one of the 4 great looking metallic colours and explore the globe!

- Made from polycarbonate
- Voluminous thanks to expandability on Spinner 66 and 76
- Cross ribbons in top and bottom compartment
- Lined divider with 2 zipped pockets and shirt pocket
- Fixed 3-digit recessed TSA Lock





**89302 (37G\*001): SPINNER 55**  
40 x 55 x 20 || 36.0 L - 2.4 KG



**89303 (37G\*002): SPINNER 66 EXP**  
46 x 66 x 27/32 || 73/84.5 L - 3.6 KG



**89304 (37G\*003): SPINNER 76 EXP**  
51 x 77 x 30/35 || 108/127.5 L - 4.0 KG



**\*08**  
Aluminium  
1004

**\*04**  
Jade Green  
1457

**\*01**  
Metallic Blue  
1541

**\*09**  
Diamond Black  
2659



L I T T L E



# SOFT SIDE

# HEROLITE™

**3** YEAR  
WARRANTY

*American Tourister* is again challenging the status quo, with our Herolite collection starting at an incredible weight of only 1.5 kg for the Upright® 55. Thanks to an innovative construction, using fiberglass pultrusions and polypropylene injected reinforcements, Herolite surprises with incredible lightness while offering superior strength. The contemporary design, paired with bright colour accents match the playful spirit of young travellers. Beat the routine and travel lighter than ever on your next journey!

- Extreme lightness: from 1.5 kg for the Upright 55
- Improved functionality: two big front pockets
- Two design executions give you more choice
- Ergonomic and flat side handle
- TSA key padlock



# HEROLITE 7231 26G

SOFT SIDE



80378 (26G\*008): HANG. TOILET KIT\*  
27 x 24.5 x 9 || 7.0 L - 0.3 KG



2 year warranty



80370 (26G\*001): SUPER LIGHT UPR. 55  
40 x 55 x 20 || 41.0 L - 1.5 KG



80371 (26G\*002): SUPER LIGHT SPIN. 55  
40 x 55 x 20 || 42.0 L - 1.5 KG



80372 (26G\*003): SUPER LIGHT SPIN. 55 EXP  
35 x 55 x 20/25 || 38/42 L - 1.6 KG



80373 (26G\*004): SUPER LIGHT SPIN. 56\*  
45 x 56 x 25 || 51.0 L - 1.8 KG



80374 (26G\*005): SUPER LIGHT SPIN. 67  
43 x 67 x 26 || 68.0 L - 2.0 KG



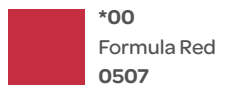
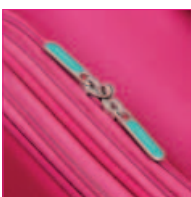
80375 (26G\*006): SUPER LIGHT SPIN. 74  
47.5 x 74 x 29 || 95.0 L - 2.2 KG



80376 (26G\*007): DUFFLE/WH 79\*  
39 x 79 x 33 || 84.0 L - 2.4 KG



\* Not available in 1149 (\*90) Bubble Gum Pink and 4219 (\*04) Cactus Green



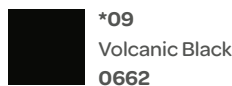
\*00  
Formula Red  
0507



\*90  
Bubble Gum Pink  
1149



\*04  
Cactus Green  
4219



\*09  
Volcanic Black  
0662



\*01  
Midnight Blue  
1549

# HEROLITE LIFESTYLE™

**3** YEAR  
WARRANTY

The Lifestyle Edition of our Herolite collection is a modern interpretation of lightweight luggage. A contemporary fabric mix provides the range with a unique and distinctive look, while the innovative construction, using fiberglass and polypropylene injected reinforcements, results in incredible lightness and superior strength. Be stylish and travel lighter than ever on your next journey!

- Contemporary fabric mix
- Improved functionality: two big front pockets
- Ergonomic and flat side handle
- TSA key padlock





# HEROLITE LIFESTYLE 7231 26G

SOFT  
SIDE



**80432 (26G\*101): LIFESTYLE UPR. 55**  
40 x 55 x 20 || 41.0 L - 1.6 KG



**80433 (26G\*102): LIFESTYLE SPIN. 55**  
40 x 55 x 20 || 42.0 L - 1.7 KG



**80434 (26G\*103): LIFESTYLE SPIN. 55 EXP**  
35 x 55 x 20/25 || 38/42 L - 1.6 KG



**80435 (26G\*105): LIFESTYLE SPIN. 67**  
43 x 67 x 26 || 68.0 L - 2.1 KG



**80436 (26G\*106): LIFESTYLE SPIN. 74**  
47,5 x 74 x 29 || 95.0 L - 2.4 KG



**\*94**  
Khaki  
1475

**\*41**  
Navy  
1596

**\*10**  
Pomegranate  
5929

# SUMMER VOYAGER™

**3** YEAR  
WARRANTY

Summer Voyager is a well featured softside range, ideal for the global explorer and value conscious traveller. A rich and resistant polyester mix is wrapped up in a sleek and modern design while a variety of functional features ensure smooth travelling and packing all around the globe. The range is completed with a Spinner 56, ideal for easyJet and British Airways, along with other bags to provide a full assortment mix. Choose one of the contemporary colours and be ready to discover the world!

- High functionality paired with a resistant look
- Fully featured interior including cross ribbons in top and bottom compartment
- Expandability on selected models
- Spinners feature double wheels to ensure smooth rolling comfort
- Fixed TSA Lock for added security
- One new colour: Breeze Blue



# SUMMER VOYAGER 7309 29G

SOFT SIDE



85465 (29G\*008): BEAUTY CASE\*  
32.5 x 30 x 19 || 15.0 L - 0.6 KG



2 year warranty



85464 (29G\*007): 3-WAY BOARDING BAG\*  
40 x 30 x 20 || 26.0 L - 0.7 KG



2 year warranty



85458 (29G\*001): UPRIGHT 55  
40 x 55 x 20 || 38.5 L - 2.5 KG



85459 (29G\*002): SPINNER 55  
40 x 55 x 20 || 36.0 L - 2.6 KG



85460 (29G\*003): SPINNER 56\*  
45 x 56 x 25 || 49.0 L - 2.8 KG



85461 (29G\*004): SPINNER 68 EXP  
43 x 68 x 28/30 || 67.5/76 L - 3.3 KG



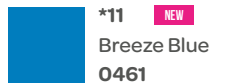
85462 (29G\*005): SPINNER 79 EXP  
47 x 79 x 32/34 || 112/123 L - 3.9 KG



85463 (29G\*006): DUFFLE/WH 81\*  
44 x 81 x 34 || 104.0 L - 3.2 KG



\* Not available in 0461 (\*11) Breeze Blue and 5198 (\*08) Volt Grey

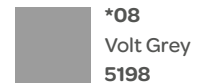


\*11 NEW

Breeze Blue  
0461



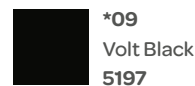
\*00  
Ribbon Red  
1748



\*08  
Volt Grey  
5198



\*01  
Midnight Blue  
1549



\*09  
Volt Black  
5197

# JOYRIDE™

## NEW

### 3 YEAR WARRANTY

For the most enjoyable trip you need the most exciting luggage and Joyride will surprise you with a fresh and playful design paired with increased functionality. Big packers will fall in love with the practical expandability feature which offers extra storage space when needed. Take your case, pack as much as you can and let's go for a ride all over the world!

- Fixed 3-dial combination lock on all sizes
- Expandability on Spinner 69 and 79
- 2 easy access front pockets
- Comfortable top and side carry handles on Spinner 69 and 79





**89151 (36G\*001): UPRIGHT 55**  
40 x 55 x 20 || 40.5 L - 2.5 KG



**89152 (36G\*002): SPINNER 55**  
40 x 55 x 20 || 37.5 L - 2.5 KG



**89156 (36G\*003): SPINNER 69 EXP**  
44 x 69 x 27/29 || 67/74 L - 3.4 KG



**89158 (36G\*004): SPINNER 79 EXP**  
48 x 79 x 31/33 || 106.5/118 L - 4.1 KG



**\*09**  
Obsidian Black  
0413



**\*01**  
Nordic Blue  
0577



**\*00**  
Flame Red  
0501



**\*11**  
Hawaii Blue  
6323

# FUNSHINE™

**3** YEAR  
WARRANTY

Chase the sunshine around the world with **American Tourister's** softside collection, Funshine! The clean front panel design is accentuated by an appealing coloured stitching and accent piping, providing the line with a contemporary and playful design. Thanks to its maximum volume, this line is ideal for heavy packers who look for a stylish and affordable suitcase.

- Maximised volume thanks to boxy shape and functional front pocket in all sizes
- Fixed 3-dial combination lock
- Elastic cross ribbons and mesh pocket
- 5 colourful options with contrasting piping and stitching





75506 (20G\*001): UPRIGHT 55  
40 x 55 x 20 || 39.0 L - 2.5 KG



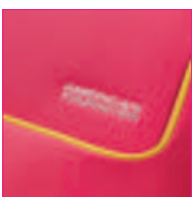
75507 (20G\*002): SPINNER 55  
40 x 55 x 20 || 36.0 L - 2.5 KG



75508 (20G\*003): SPINNER 66  
43 x 66 x 27 || 63.5 L - 3.3 KG



75509 (20G\*004): SPINNER 79  
46 x 79 x 31 || 99.5 L - 3.9 KG



**\*11**  
Blue Ocean  
1099

**\*00**  
Rio Red  
2553

**\*01**  
Orion Blue  
2610

**\*28**  
Sparkling Graphite  
2541

**\*90**  
Bright Pink  
2563

# SUNBEAM™

**3** YEAR  
WARRANTY

Sunbeam combines contemporary design with all the must have features for the enthusiastic globetrotter. The boxy shape is accented by bright colour details on the front that make it easy to recognise your luggage on any luggage belt. Maximal volume and expandability on Spinner 69 and 79 provide additional space. No doubt, with Sunbeam you can roll all over the world with one of *American Tourister's* best softside suitcases!

- Maximised volume thanks to boxy shape and expandability on Spinner 69 and 79
- Fixed 3-dial TSA Lock
- 2 spacious front pockets
- Sportive side carry handle allows comfortable carrying







**74001 (12G\*001): UPRIGHT 55**  
40 x 55 x 20 || 43.0 L - 2.2 KG



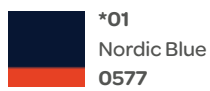
**74002 (12G\*002): SPINNER 55**  
40 x 55 x 20 || 38.0 L - 2.2 KG



**74003 (12G\*003): SPINNER 69 EXP**  
42 x 68,5 x 29/32 || 66/75 L - 2.9 KG



**74004 (12G\*004): SPINNER 79 EXP**  
45 x 79 x 34/37 || 105/117 L - 3.5 KG



**\*01**  
Nordic Blue  
0577



**\*09**  
After Dark  
2102

# PIKES PEAK™

**3** YEAR  
WARRANTY

Inspired by the world-famous mountain races of Pikes Peak, our softside collection brings a sportive design, paired with comfortable features and superior lightness to the market. The bright and colourful contrast accents provide the range with a sportive and modern look, while a recessed 3-digit TSA Lock keeps all your belongings safe and secure. Be ready to reach the peak, all over the world!

- Superior lightness starting from 2.0 kg
- Fixed 3-digit recessed TSA Lock
- Expandability to pack more when needed
- Cross ribbons in top and bottom compartment





**74048 (14G\*001): UPRIGHT 55 EXP**  
40 x 55 x 20/23 || 42.5/46.5 L - 2.0 KG



**74049 (14G\*002): SPINNER 55**  
40 x 55 x 20 || 40.0 L - 2.1 KG



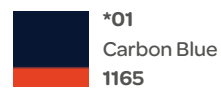
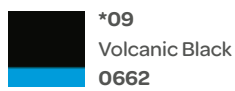
**74050 (14G\*003): SPINNER 68 EXP**  
43 x 68,5 x 26/27,5 || 68/72 L - 2.6 KG



**74051 (14G\*004): SPINNER 80 EXP**  
47 x 80 x 29/31 || 102/110 L - 3.1 KG



**74052 (14G\*005): DUFFLE/WH 75**  
39 x 75 x 34 || 82.0 L - 2.8 KG



# LITEWING™

NEW

3 YEAR  
WARRANTY

Enjoy the fun of LiteWing, our new, surprisingly light softside collection. Especially developed for travellers who want to enjoy their trip free from worries of heavy luggage, this line offers a wide range of extremely light cabin size items in a contemporary, soft and sportive look. LiteWing includes the essential features, such as cross ribbons, TSA padlock and additional easy access pockets, so pick up one of these trendy cases and travel lighter than ever!

- TSA key padlock
- Extreme lightness, starting from 1.4 kg
- Sportive design thanks to the ripstop fabric





89456 (38G\*001): UPRIGHT 55  
40 x 55 x 20 || 40.0 L - 1.4 KG



89457 (38G\*002): SPINNER 55  
40 x 55 x 20 CM || 41.0 L - 1.5 KG



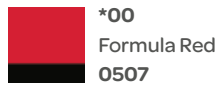
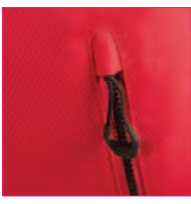
89458 (38G\*003): SPINNER 55 EXP  
35 x 55 x 23/25 || 38/42 L - 1.5 KG



89459 (38G\*004): SPINNER 70  
42 x 70 x 26 || 67.0 L - 2.4 KG



89460 (38G\*005): SPINNER 81  
47 x 81 x 29 || 99.0 L - 2.7 KG



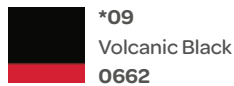
**\*00**  
Formula Red  
0507



**\*01**  
Insignia Blue  
4424



**\*21**  
Aqua Turquoise  
5467



**\*09**  
Volcanic Black  
0662



**\*11**  
Racing Blue  
5460

NUMBER OF TRIPS  
IN AVERAGE BY AGE (2017)



MILLENNIALS

6.5



GEN X

5.3

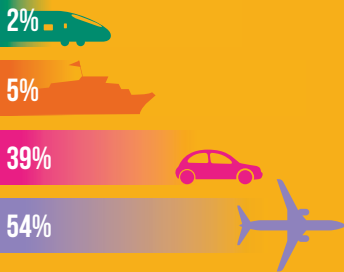


BABY BOOMERS

5.5

Source: aarp

PREFERRED MODE  
OF TRANSPORTATION 2017



Source: e-unwto

In 2017, **75%**  
of Millennials want to  
travel abroad as much  
as possible

**40%** of millennials  
will increase their  
travel budgets

About **83%**  
of millennials would  
like to take a greater  
number of short breaks  
in a year



Source: stayplanner.com, Lonely Planet

# TRAVEL TRENDS

## MIX PLEASURE WITH BUSINESS

Would you extend a business trip into a leisure trip?



55%

MILLENNIALS



28%

GEN X



25%

BABY BOOMERS

Source: hipmunk

Tourism outbounds  
increased by

**3.1%**

in 2016 in Europe

Source: ETC Quarterly report

By 2017 total passenger  
numbers are expected  
to rise to

**3.91**  
BILLION



Source: IATA



Source: Lonely Planet

## TOP DESTINATIONS FOR 2017



Source: traveller.com

## TOP FIVE TYPES OF HOLIDAYS 2016



**47%**  
City break



**44%**  
Beach break



**20%**  
All-inclusive holiday



**13%**  
Cruise



**12%**  
Lake and mountains

Source: abta

# READY TO BOARD

## 55X40X20



**LOCK'N'ROLL**  
SPINNER 55



**AIR FORCE 1**  
SPINNER 55



**AIR FORCE 1**  
SPINNER 55 GRAD.



**MWM SUMMER FUN**  
SPINNER 55



**MWM SUMMER FUN**  
SPINNER 55



**SOUNDBOX**  
SPINNER 55 EXP



**SKYTRACER**  
SPINNER 55



**BON AIR**  
SPINNER S STRICT



**WAVEBREAKER**  
SPINNER 55



**TRACKLITE**  
SPINNER 55



**ZIGGZAGG**  
SPINNER 55



**TECHNUM**  
SPINNER 55



**HEROLITE**  
SUPER LIGHT UPR.55



**HEROLITE**  
SUPER LIGHT SPIN.55



**HEROLITE**  
LIFESTYLE UPR. 55



**HEROLITE**  
LIFESTYLE SPIN. 55



**SUMMER VOYAGER**  
UPRIGHT 55



**SUMMER VOYAGER**  
SPINNER 55



**JOYRIDE**  
UPRIGHT 55



**JOYRIDE**  
SPINNER 55



**FUNSHINE**  
UPRIGHT 55



**FUNSHINE**  
SPINNER 55



**SUNBEAM**  
UPRIGHT 55



**SUNBEAM**  
SPINNER 55



**PIKES PEAK**  
UPRIGHT 55 EXP



**PIKES PEAK**  
SPINNER 55



**LITEWING**  
UPRIGHT 55



**LITEWING**  
SPINNER 55



**ROAD QUEST**  
2 COMP.DUFFEL/WH 55



**WAVEBREAKER**  
DISNEY  
SPINNER 55



**WAVEBREAKER**  
STAR WARS  
SPINNER 55



**WAVEBREAKER**  
MARVEL  
SPINNER 55

## OTHERS



**HEROLITE**  
SUPER LIGHT  
SPIN.55 EXP



**HEROLITE**  
SUPER LIGHT  
SPIN.56



**HEROLITE**  
LIFESTYLE SPIN. 55 EXP



**SUMMER VOYAGER**  
SPINNER 56



**SUMMER VOYAGER**  
3-WAY BOARDING BAG



**LITEWING**  
SPINNER 55 EXP



**AT WORK**  
Rolling Tote 15.6"



**DISNEY LEGENDS**  
SPINNER 55



**STAR WARS LEGENDS**  
SPINNER 55



**MARVEL LEGENDS**  
SPINNER 55







**CASUAL**

# URBAN GROOVE™

Hands-free mobility, athleisure and casualisation are the main trends supporting the current backpack growth. **American Tourister** introduces this dedicated backpack collection with a wide range of models. Thanks to diverse designs, features and colours, Urban Groove is satisfying multiple consumer demands – from a daily backpack for leisure time and school to a sophisticated office backpack. Choose your style and groove on!

- Padded laptop compartment with elastic fixation strap on selected models only
- Multiple compartments for better organisation and easy storage
- Ergonomic and padded back panels provide carrying comfort
- Selected models feature a rain cover for additional protection
- Extreme lightness





**78825 (24G\*001): UG1 BACKPACK**  
31,5 x 44 x 24 || 29.0 L - 0.4 KG



Only available in 1041 (\*09) Black and 1726 (\*00) Red



**78826 (24G\*002): UG2 LAPT. BACKPACK 14.1"**  
30,5 x 45 x 22,5 || 24.0 L - 0.5 KG

\*\* 24,1 x 34,3 x 3,3  
35,8 cm/14.1"



Only available in 1041 (\*09) Black and 1090 (\*01) Blue



**78827 (24G\*003): UG3 LAPT. BACKPACK 15.6"**  
30,5 x 45 x 23 || 25.0 L - 0.5 KG

\*\* 26 x 37,5 x 3,5  
39,6 cm/15.6"



Only available in 1041 (\*09) Black, 1726 (\*00) Red and 1090 (\*01) Blue



**78828 (24G\*004): UG4 LAPT. BACKPACK 15.6"**  
32 x 47 x 23 || 27.0 L - 0.5 KG

\*\* 26 x 37,5 x 3,5  
39,6 cm/15.6"



Only available in 2606 (\*29) Black/Lime Green and 2642 (\*19) Black/Blue



**78829 (24G\*005): UG5 LAPT. BACKPACK 15.6"**  
31,5 x 45 x 24 || 25.0 L - 0.6 KG

\*\* 26 x 37,5 x 3,5  
39,6 cm/15.6"



Only available in 1041 (\*09) Black and 1726 (\*00) Red



**78830 (24G\*006): UG6 LAPT. BACKPACK 15.6"**  
32 x 48 x 23,5 || 26.0 L - 0.6 KG

\*\* 26 x 37,5 x 3,5  
39,6 cm/15.6"



Only available in 1041 (\*09) Black and 1090 (\*01) Blue



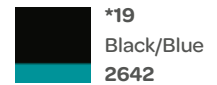
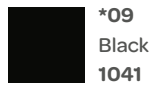
**78831 (24G\*007): UG7 OFFICE BACKPACK 15.6"**  
33 x 46 x 24 || 26.0 L - 0.7 KG

\*\* 26 x 37,5 x 3,5  
39,6 cm/15.6"



Only available in 1041 (\*09) Black and 1090 (\*01) Blue

\*\* Maximum laptop size



# ROAD QUEST™

**3** YEAR  
WARRANTY

Road Quest is the perfect companion for travels where you need to pack as much as possible without losing focus on functionality. The line includes a variety of models including the best-selling 2 compartment double deck Duffles. Several daily bags complete the assortment to have the full lifestyle approach at your reach. Take advantage of this functional and good value range to go up and down all roads!

- Great casual design with contemporary print options
- Easy packing thanks to its compression straps and double deck compartments (2 comp Duffles only)
- All Duffles stand upright thanks to reinforcement in the bottom area
- New colour: Grey/Turquoise





**74144 (16G\*007): CROSS-OVER**  
21 x 27 x 08 || 5.0 L - 0.2 KG

Only available in 1817 (\*09) Solid Black and 4172 (\*11) Bluestar Print

2 year warranty



**74146 (16G\*009): FEMALE GYM BAG**  
48 x 25 x 26,5 || 32.0 L - 0.4 KG



Only available in 1817 (\*09) Solid Black and 1819 (\*00) Solid Red

2 year warranty



**74147 (16G\*010): SPORTSBAG**  
50 x 27 x 32 || 38.0 L - 0.6 KG



Only available in 1817 (\*09) Solid Black, 4172 (\*11) Bluestar Print and 4167 (\*18) Grey/Turquoise

2 year warranty



**NEW**

**89442 (16G\*012): LAPTOP BACKPACK/WH 15.6"**  
36 x 53 x 26 || 35.0 L - 2.3 KG  
\*\* 26 x 37,5 x 3,5  
39,6 cm/15.6"

Only available in 4167 (\*18) Grey/Turquoise and 1817 (\*09) Solid Black



**74138 (16G\*001): 2 COMP. DUFFLE/WH 55**  
40 x 55 x 20 || 40.0 L - 2.7 KG



**74139 (16G\*002): 2 COMP. DUFFLE/WH M**  
38 x 69 x 29 || 62.5 L - 3.0 KG



**74140 (16G\*003): 2 COMP. DUFFLE/WH L**  
41 x 80 x 31 || 88.0 L - 3.4 KG



Only available in 1817 (\*09) Solid Black, 4172 (\*11) Bluestar Print and 4167 (\*18) Grey/Turquoise

\*\* Maximum laptop size



**\*18** NEW  
Grey/Turquoise  
4167

**\*00**  
Solid Red  
1819

**\*09**  
Solid Black  
1817

**\*11**  
Bluestar Print  
4172



A blurred background showing a business meeting environment. In the foreground, a wooden desk holds a blue notebook, a black pen, and two markers (one red, one green). A laptop is partially visible on the left. In the background, a whiteboard displays a faint flowchart or organizational chart. A solid blue vertical bar is on the right side of the image.

# BUSINESS

# AT WORK™

## NEW

Discover our new business collection AT Work, which offers a professional look with a sportive and contemporary touch thanks to blue colour detailing. The range offers a complete assortment with different sized Laptop Bags, Laptop Backpacks and Rolling Tote to be well prepared for the office or university. Designed to be your ideal daily companion, AT Work offers multiple compartments to store documents, laptop, tablet and other accessories.

Explore your creativity and think out of the box – AT Work!

- Padded laptop compartment and tablet slot
- Smart Sleeve on all Bags and Backpacks
- Padded and ergonomic shoulder straps







**88528 (33G\*001): LAPT. BACKP. 13.3"-14.1"**  
**30 x 45.5 x 20.5 || 20.5 L - 0.6 KG**  
 \*\* 24,1 x 34,3 x 3,3  
 \*\*\* 19 x 27 x 1,7  
 📄 25,7 cm/10.1" 📏 35,8 cm/14.1"  
 🎒 🎒 🎒 🎒



**88529 (33G\*002): LAPTOP BACKPACK 15.6"**  
**32 x 49.5 x 21 || 25.0 L - 0.6 KG**  
 \*\* 26 x 37,5 x 3,5  
 \*\*\* 19 x 27 x 1,7  
 📄 25,7 cm/10.1" 📏 39,6 cm/15.6"  
 🎒 🎒 🎒 🎒



**88530 (33G\*003): LAPTOP BACKPACK 17.3\*\***  
**33.5 x 52.5 x 23.5 || 34.0 L - 0.7 KG**  
 \*\* 28,7 x 42,2 x 3,8  
 \*\*\* 19 x 27 x 1,7  
 📄 25,7 cm/10.1" 📏 43,9 cm/17.3"  
 🎒 🎒 🎒 🎒



**88531 (33G\*004): LAPTOP BAG 13.3"-14.1"**  
**39 x 30 x 10.5 || 10.0 L - 0.5 KG**  
 \*\* 34,3 x 24,1 x 3,3  
 \*\*\* 19 x 27 x 1,7  
 📄 25,7 cm/10.1" 📏 35,8 cm/14.1"  
 🎒 🎒 🎒 🎒



**88532 (33G\*005): LAPTOP BAG 15.6"**  
**41.5 x 32 x 12 || 15.0 L - 0.5 KG**  
 \*\* 37,5 x 26 x 3,5  
 \*\*\* 19 x 27 x 1,7  
 📄 25,7 cm/10.1" 📏 39,6 cm/15.6"  
 🎒 🎒 🎒 🎒



**88533 (33G\*006): ROLLING TOTE 15.6\*\***  
**44 x 38 x 23 || 22.0 L - 2.5 KG**  
 \*\* 37,5 x 26 x 3,5  
 \*\*\* 19 x 27 x 1,7  
 📄 25,7 cm/10.1" 📏 39,6 cm/15.6"  
 🎒 🎒 🎒

\* Only available in 1041 (\*09) Black

\*\* Maximum laptop size

\*\*\* Maximum tablet size



**\*09**  
 Black  
**1041**

**\*41**  
 Midnight Navy  
**1552**

# CITY DRIFT™

Ready to break the business routine? City Drift is the **American Tourister** business casual collection, which offers a contemporary design for young professionals using fresh colour accents and water-repellent coated polyester in an interesting fabric combination. The multiple Bags and Backpacks offer the essential features for maximum comfort, such as small organisation pockets and dedicated compartments for papers, laptop and tablet. Choose your model and work – play – enjoy our City Drift collection.

- Urban and casual design, ideal for office and leisure time
- Laptop compartment and tablet slot
- Multiple compartments for easy storage





**80525 (28G\*001): LAPT. BACKP. 13.3"-14.1"**  
**29 x 40.5 x 20 || 20.0 L - 0.6 KG**  
 \*\* 24,1 x 34,3 x 3,3  
 \*\*\* 19 x 27 x 1,7  
 📁 25,7 cm/10.1" 📏 35,8 cm/14.1"  
 📁 📱 📺 📖



**80527 (28G\*002): LAPTOP BACKPACK 15.6"**  
**31 x 44.5 x 23 || 24.0 L - 0.7 KG**  
 \*\* 26 x 37,5 x 3,5  
 \*\*\* 19 x 27 x 1,7  
 📁 25,7 cm/10.1" 📏 39,6 cm/15.6"  
 📁 📱 📺 📖



**80529 (28G\*003): LAPTOP BAG 13.3"-14.1"**  
**41 x 31 x 8.5 || 10.0 L - 0.4 KG**  
 \*\* 34,3 x 24,1 x 3,3  
 \*\*\* 27 x 19 x 1,7  
 📁 25,7 cm/10.1" 📏 35,8 cm/14.1"  
 📁 📱 📺 📖



**80531 (28G\*004): LAPTOP BAG 15.6"**  
**43 x 30 x 12.5 || 16.0 L - 0.6 KG**  
 \*\* 37,5 x 26 x 3,5  
 \*\*\* 27 x 19 x 1,7  
 📁 25,7 cm/10.1" 📏 39,6 cm/15.6"  
 📁 📱 📺 📖



**80533 (28G\*005): 3-WAY BOARDING BAG 15.6"**  
**40 x 30 x 18 || 19.5 L - 0.8 KG**  
 \*\* 37,5 x 26 x 3,5  
 \*\*\* 27 x 19 x 1,7  
 📁 25,7 cm/10.1" 📏 39,6 cm/15.6"  
 📁 📱 📺 📖

\*\* Maximum laptop size  
 \*\*\* Maximum tablet size



**\*09**  
 Black/Grey  
 1062

**\*19**  
 Black/Blue  
 2642





# DISNEY

© Disney © MARVEL [starwars.com](http://starwars.com)  
© &™ Lucasfilm Ltd.

# WAVEBREAKER DISNEY™

NEW

Create your own travel stories with this new Wavebreaker Disney collection! A trendy print has been created on *American Tourister's* new collection Wavebreaker. The dotted texture helps to protect the surface against scratches. The romantic Minnie loves Mickey design has been created designed especially for those who prefer travelling in Disney style.

- Fixed 3-digit TSA Lock on Spinner 67 & 77
- Cross ribbons, zipped divider and apron pocket allow easy storing
- Trendy prints
- Textured surface protects against scratches





85667 (31C\*001): SPINNER 55  
40 x 55 x 20 || 36.0 L - 2.6 KG



85670 (31C\*004): SPINNER 67  
47 x 67 x 26 || 64.0 L - 3.6 KG



85673 (31C\*007): SPINNER 77  
52 x 77 x 29 || 96.0 L - 4.2 KG



**\*00**  
Minnie Loves  
Mickey  
5975



**\*01**  
Donald Duck  
5278

Available as of May '17

# WAVEBREAKER STAR WARS™

NEW

Create your own travel stories with this new Wavebreaker *Star Wars* collection! A trendy print has been created on *American Tourister's* new collection Wavebreaker. The dotted texture helps to protect the surface against scratches. *Star Wars* fans can conquer the world with BB-8 by their side! Get away on your next adventure!

- Fixed 3-digit TSA Lock on Spinner 67 & 77
- Cross ribbons, zipped divider and apron pocket allow easy storing
- Trendy prints
- Textured surface protects against scratches







85669 (31C\*003): SPINNER 55  
40 x 55 x 20 || 36.0 L - 2.6 KG



85672 (31C\*006): SPINNER 67  
47 x 67 x 26 || 64.0 L - 3.6 KG



85688 (31C\*009): SPINNER 77  
52 x 77 x 29 || 96.0 L - 4.2 KG



\*18  
BB-8  
4837

# WAVEBREAKER MARVEL™

NEW

Create your own travel stories with this new Wavebreaker MARVEL collection! A trendy print has been created on *American Tourister's* new collection Wavebreaker. The dotted texture helps to protect the surface against scratches. Travelling like a superhero has never been so easy with the Avengers Rock.

- Fixed 3-digit TSA Lock on Spinner 67 & 77
- Cross ribbons, zipped divider and apron pocket allow easy storing
- Trendy prints
- Textured surface protects against scratches





85668 (31C\*002): SPINNER 55  
40 x 55 x 20 || 36.0 L - 2.6 KG



85671 (31C\*005): SPINNER 67  
47 x 67 x 26 || 64.0 L - 3.6 KG



85687 (31C\*008): SPINNER 77  
52 x 77 x 29 || 96.0 L - 4.2 KG



\*08  
Avengers Rock  
5976

# DISNEY LEGENDS™ - TEENS/ADULTS

Disney and *American Tourister* unite bright coloured Disney designs with fun and quality luggage you can rely on. The ideal collection for those young at heart who love Disney.

- 3-digit combination lock





64478 (19C\*006): SPINNER 55 ALFATWIST  
36 x 55 x 24 || 32.5 L - 2.5 KG



64479 (19C\*007): SPINNER 64 ALFATWIST  
45.5 x 64 x 27 || 62.5 L - 3.4 KG



64480 (19C\*008): SPINNER 74 ALFATWIST  
52.5 x 74 x 31 || 88.0 L - 4.3 KG



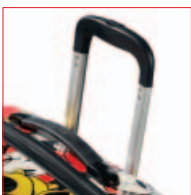
64478 (19C\*006): SPINNER 55 ALFATWIST  
36 x 55 x 24 || 32.5 L - 2.5 KG



64479 (19C\*007): SPINNER 65 ALFATWIST  
45.5 x 64 x 27 || 62.5 L - 3.4 KG



64480 (19C\*008): SPINNER 75 ALFATWIST  
52.5 x 74 x 31 || 88.0 L - 4.3 KG



**\*02** NEW  
Mickey Flash Pop  
6276



**\*10**  
Minnie Comics  
5724



**\*09**  
Minnie Dots  
4523



**\*20**  
Mickey Comics  
5725

# STAR WARS LEGENDS™ - TEENS/ADULTS 3496 22C

PVC  
free



This vintage *Star Wars* Comics design of *American Tourister*, is ideal for all people passionate about the *Star Wars* characters. It's the perfect travel accessory for *Star Wars* fans of all ages.

- 3-digit combination lock



75414 (22C\*007): SPINNER 55  
36 x 55 x 24 || 32.5 L - 2.5 KG



75415 (22C\*008): SPINNER 65  
45.5 x 64 x 27 || 62.5 L - 3.4 KG



75416 (22C\*009): SPINNER 75  
52.5 x 74 x 31 || 88.0 L - 4.3 KG



\*19  
Star Wars Comics  
5380

# MARVEL LEGENDS™ - TEENS/ADULTS 3451 21C

PVC  
free

DISNEY

A vibrant product with vintage, comic MARVEL design. The perfect luggage collection for those young at heart with a passion for the epic MARVEL heroes.

- 3-digit combination lock



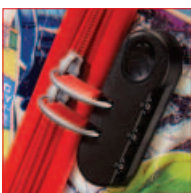
64491 (21C\*006): SPINNER 55  
36 x 55 x 24 || 32.5 L - 2.5 KG



64492 (21C\*007): SPINNER 65  
45.5 x 64 x 27 || 62.5 L - 3.4 KG



64493 (21C\*008): SPINNER 75  
52.5 x 74 x 31 || 88.0 L - 4.3 KG



\*10  
MARVEL Comics  
4528

# CABIN AIRLINE DIMENSIONS

## MAXIMUM EXTERNAL DIMENSIONS AND WEIGHT ALLOWED IN ECONOMY CLASS

AIRLINE	AIRLINE	MAX. DIMENSIONS	MAX. WEIGHT
	Aegean Airlines	56 x 45 x 25 cm	8 kg
	Aer Lingus	55 x 40 x 24 cm	10 kg
	Aeroflot	55 x 40 x 20 cm (max. 115 cm)	10 kg
	Aerolineas Argentinas	55 x 35 x 25 cm	10 kg
	Aeromexico	56 x 36 x 23 cm	10 kg
	Air Berlin	55 x 40 x 23 cm	8 kg
	Air Canada	55 x 40 x 23 cm	10 kg
	Air Caraïbes	55 x 40 x 20 cm (max. 115 cm)	12 kg
	Air Europa	55 x 35 x 25 cm	10 kg
	Air France	55 x 35 x 25 cm	12 kg
	Air India	55 x 35 x 25 cm	8 kg
	Air New Zealand	max. 118 cm	7 kg
	Air Transat	51 x 40 x 23 cm	10 kg
	Alitalia	55 x 35 x 25 cm	8 kg
	All Nippon Airways	55 x 40 x 25 cm (max. 115 cm)	10 kg
	American Airlines	56 x 36 x 23 cm	
	Arka	55 x 40 x 20 cm	7 kg
	Asiana Airlines	55 x 40 x 20 cm (max. 115 cm)	10 kg
	Austrian Airlines	55 x 40 x 23 cm	8 kg

AIRLINE	AIRLINE	MAX. DIMENSIONS	MAX. WEIGHT
	Blue1	55 x 40 x 23 cm	8 kg
	BMI Regional	55 x 40 x 23 cm	12 kg
	British Airways	56 x 45 x 25 cm	23 kg
	Brussels Airlines	55 x 40 x 23 cm	12 kg
	Cathay Pacific	56 x 36 x 23 cm	7 kg
	Cebu Pacific	56 x 35 x 23 cm	7 kg
	China Airlines	56 x 36 x 23 cm	7 kg
	Condor	55 x 40 x 20 cm	6 kg
	Corsair	55 x 40 x 20 cm (max. 115 cm)	12 kg
	Czech Airlines	55 x 45 x 25 cm	8 kg
	Delta Air Lines	56 x 35 x 23 cm (max. 114 cm)	
	easy Jet	56 x 45 x 25 cm	
	El-AL Israel Airlines	56 x 45 x 25 cm (max. 115 cm)	8 kg
	Emirates	55 x 38 x 20 cm	7 kg
	Ethiopian Airlines	55 x 40 x 23 cm	7 kg
	Etihad Airways	50 x 40 x 25 cm (max. 115 cm)	7 kg
	Finnair	56 x 45 x 25 cm	10 kg
	Flybe	55 x 35 x 20 cm	10 kg
	Germania	55 x 40 x 20 cm	6 kg



	AIRLINE	MAX. DIMENSIONS	MAX. WEIGHT
	Eurowings	55 x 40 x 23 cm	8 kg
	HOP!	55 x 35 x 25 cm (max. 115 cm)	12 kg
	Iberia	56 x 45 x 25 cm	
	Israir Airlines	50 x 40 x 20 cm	8 kg
	Japan Airlines	55 x 40 x 25 cm (max. 115 cm)	10 kg
	Jet Airways	55 x 35 x 25 cm (max. 115 cm)	7 kg
	Jet2	56 x 45 x 25 cm	10 kg
	KLM	55 x 35 x 25 cm (max. 115 cm)	12 kg
	Korean Air	55 x 40 x 20 cm (max. 115 cm)	12 kg
	LATAM Airlines	55 x 35 x 25 cm	8 kg
	LOT	55 x 40 x 23 cm	8 kg
	Lufthansa	55 x 40 x 23 cm	8 kg
	Malaysia Airlines	56 x 36 x 23 cm (max. 115 cm)	7 kg
	Monarch	56 x 40 x 25 cm	10 kg
	Norwegian	55 x 40 x 23 cm (to/from Dubai: 8kg)	10 kg
	Olympic Air	55 x 40 x 23 cm	8 kg
	Philippine Airlines	max. 115 cm	7 kg
	Qantas	56 x 36 x 23 cm (max. 115 cm)	7kg
	Qatar Airways	50 x 37 x 25 cm	7 kg

	AIRLINE	MAX. DIMENSIONS	MAX. WEIGHT
	Ryanair	55 x 40 x 20 cm	10 kg
	Scandinavian Airlines	55 x 40 x 23 cm	8 kg
	Singapore Airlines	max. 115 cm	7 kg
	South African Airways	56 x 36 x 23 cm	8 kg
	Swiss International Airlines	55 x 40 x 23 cm	8 kg
	Tap Portugal	55 x 40 x 20 cm (max. 115 cm)	8 kg
	Thai Airways	56 x 45 x 25 cm	7 kg
	Thomas Cook Airlines	55 x 40 x 20 cm	6 kg
	Transavia	45 x 40 x 25 cm	10 kg
	TUfly	55 x 40 x 20 cm	6 kg
	Tunisair	max. 115 cm	8 kg
	Turkish Airlines	55 x 40 x 23 cm	8 kg
	United Airlines	56 x 35 x 22 cm (max. 114 cm)	
	Vietnam Airlines	56 x 36 x 23 cm (max. 115 cm)	7 kg
	Virgin Atlantic	56 x 36 x 23 cm	10 kg
	Vueling	55 x 40 x 20 cm	10 kg
	Wizz Air	42 x 32 x 25 cm	
	XL Airways	55 x 35 x 25 cm	5 kg

We cannot be held responsible if an airline applies other cabin size standards.

# POINT OF SALE MATERIAL

## BON AIR POS 2017



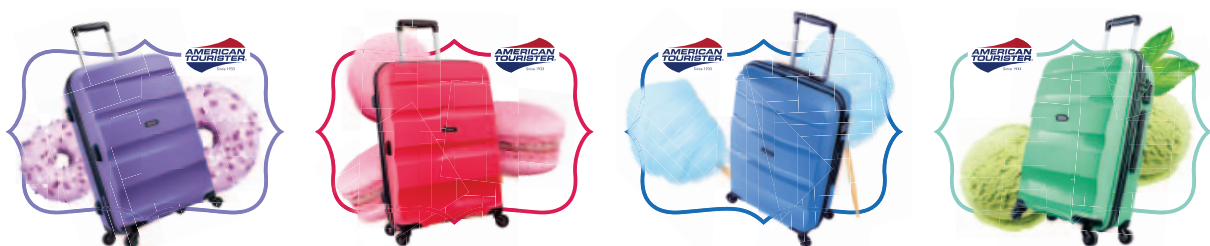
**Vertical Banner**  
(60 x 120 cm)



**Square Banner**  
(150 x 150 cm)



**3D Counter Card**  
(A3)



**Stickers**  
(23.5 x 26 cm)

# DISPLAYS



**Cabin Size Display**  
(59 x 120 x 45 cm)



**Backpack Display**  
(66.5 x 160 x 106 cm)



# AMERICAN TOURISTER BRAND POS



**Logo Brick**  
(18 x 12.8 x 1 cm)



**Vinyl Doming Sticker**  
(5.3 x 3.2 cm)

# WHEN LIFE CALLS - BON AIR



**3D Counter Card**  
(A3)



**Square Banner**  
(150 x 150 cm)

# AMERICAN TOURISTER WORLDWIDE

PRESENCE IN OVER 90 COUNTRIES WORLDWIDE



Out Of Home Campaign, **Australia**



Pop-up, Afisha Music Festival, **Moscow**



Tram Branding, **Germany**



TV Commercial aired in **Spain, France and Italy**



Charleroi Airport, **Belgium**



Out Of Home Campaign, metro Paris, **France**



Out Of Home Campaign, **Scandinavia**



UEFA public viewings, **Germany**



Bon Air, Paris, **France**



Augmented reality campaign, **Germany**



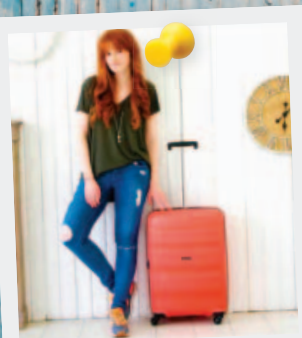
Out Of Home Campaign, **UK**



Out Of Home Campaign, **UK**



#MeAndMyAT



Bon Air



Skytracer



Lock 'n' Roll



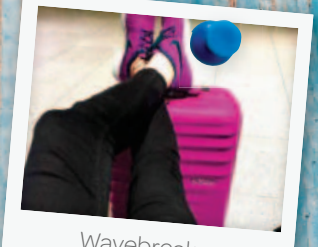
#MeAndMyAT



Air Force 1



Air Force 1



Wavebreaker



MARVEL Legends



Urban Groove



#MeAndMyAT



Wavebreaker



#MeAndMyAT



Bon Air

# AMERICAN TOURISTER SHOP IN THE SHOP



# GENERAL INFO

## PRODUCT CODES

All **American Tourister** product codes appear as follows:

For example: **Lock'n'Roll Spinner 69 - Skydiver Blue**

**66983 | 2608**

MODEL CODE:

**Lock'n'Roll Spinner 69**

COLOUR CODE:

**Skydiver Blue**

**(06G | \*11 | 001)**

PRODUCT LINE CODE:

**Lock'n'Roll**

COLOUR CODE:

**Skydiver Blue**

MODEL CODE:

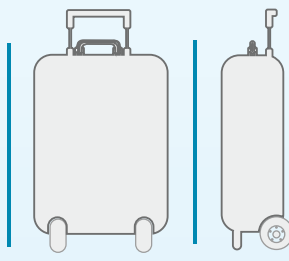
**Spinner 69**

**SAP PRODUCT CODE**

**FORMER PRODUCT CODE**

## DIMENSIONS

**L x H x W**



The dimensions shown in the tables are the outside dimensions including handles, wheels, bottom glides, side pockets and other external components. Measurements of volume, dimensions and weight are carried out in the **American Tourister** laboratories using procedures whereby tolerances up to 1.5 cm in dimensions and 5% in weight and volume cannot be excluded.

*American Tourister reserves the right to amend the specifications, colours, dimensions and weight of any product without prior warning. Colour deviation may occur due to the printing technique used.*

## QUALITY TESTS



**Tumble test**



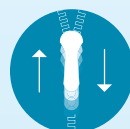
**Handle test**



**Drop test**



**Wheel test**



**Zipper test**



**Locks test**

We deliver the quality. You conduct the test. Each journey. Each day. You might not have given it any thought, but each **American Tourister** product undergoes the most stringent controls and tests before it goes on the market. Of course, the ultimate test is conducted by you, the consumer.

## SYMBOLS



Adaptable laptop compartment



Anti-slip shoulder strap



Bayonet closing



Bottle holder



Bottom grip



Cabin baggage that can be taken on board an aircraft with most airlines.

Please always check with your airline before departure which cabin size restrictions apply on size and weight.



Combi lock with TSA function



Combination lock



Combi padlock with TSA function



Cross ribbons



Divider pad



Elastic loops



Ergonomic straps



Expandable



Hanging loop / hook



ID tag



Integrated wheels



Internal organisation



Key hanger



Key padlock with TSA function



M ribbons



Rain cover



Reflective detail



Removable shoulder strap



Smart Sleeve / Smart pocket which quickly slips over the handle of an Upright/Spinner case



Sternum strap



Wet pocket



With laptop compartment



With tablet compartment

## #MEANDMYAT



[WWW.AMERICANTOURISTER.EU](http://WWW.AMERICANTOURISTER.EU)



[AMTOURISTER\\_EU](https://www.instagram.com/AMTOURISTER_EU)



[ATOURISTEREU](https://www.pinterest.com/ATOURISTEREU)



[AMTOURISTEREU](https://twitter.com/AMTOURISTEREU)



[AMERICANTOURISTER.EU](https://www.facebook.com/AMERICANTOURISTER.EU)



[AMERICANTOURISTEREU](https://www.youtube.com/AMERICANTOURISTEREU)

