

CATALOGUE 2018



Cristiano Ronaldo
Cristiano Ronaldo

1933



In **1933** Sol Koffler founded the American Tourister luggage company in Providence (Rhode Island), USA.

1965



1965
American Tourister was the first company to "flight test" their bags with flight attendants from major airlines.

1985



1985
Softside luggage is completing the existing hardside offer - Durable cases that could withstand even the toughest quality test, a gorilla.

2017



2017
American Tourister is one of the leading luggage brands, trusted all over the world.

2018



2018
American Tourister is taking the next step to become the world's leading luggage brand and is teaming up with the famous football player Cristiano Ronaldo for its 2018 global media campaign.

THE BRAND TODAY

American Tourister is the 2nd biggest luggage brand in the world with a presence in more than 90 countries worldwide.

Today we offer a wide selection of qualitative youthful, vibrant and reliable luggage at an affordable price. Embedded with distinctive high quality traits, the **American Tourister** collections combine style & practicality and cover a wide selection of travel luggage, ideal for your next leisure travel.

CONTENTS


HARDSIDE

	page		
	6	LOCK'N'ROLL	6057 06G
	8	AIR FORCE 1	6610 18G
	10	AIR FORCE 1 - GRADIENT	6610 18G
NEW	12	MODERN DREAM	9248 55G
	14	SOUNDBOX	7675 32G
NEW	16	SUNSIDE	8982 51G
	18	SKYTRACER	6873 22G
	20	BON AIR	2547 85A
	22	WAVEBREAKER	6588 15G
NEW	24	WAVEBREAKER X CEIZER	9301 58G
	24	TRACKLITE	7741 34G
NEW	28	MIGHTY MAZE	9184 53G


SOFTSIDE

	page		
	32	AIRBEAT	8291 45G
	34	HEROLITE	7231 26G
	36	HEROLITE LIFESTYLE	7231 26G
	38	SUMMER VOYAGER	7309 29G
	40	SONICSURFER	8292 46G
	42	SONICSURFER LIFESTYLE	8292 46G
NEW	44	HOLIDAY HEAT	8823 50G
	46	FUNSHINE	6743 20G
	48	LITEWING	7816 38G
NEW	50	INSTAGO	9242 54G
NEW	52	SKYGLIDER	9255 57G


CASUAL

	page		
	56	ROAD QUEST	6589 16G
	58	URBAN GROOVE	7091 24G
NEW	60	URBAN GROOVE LIFESTYLE	7091 24G

BUSINESS

	page		
	64	AT WORK	7721 33G
	66	CITY DRIFT	7259 28G


AMERICAN TOURISTER WORLDWIDE

	page		
	68	AMERICAN TOURISTER WORLDWIDE	

DISNEY

	page		
	72	WAVEBREAKER DISNEY	7321 31C
	76	WAVEBREAKER MARVEL	7321 31C
	78	WAVEBREAKER STAR WARS	7321 31C
	80	LEGENDS DISNEY	3450 19C
	82	LEGENDS STAR WARS	3496 22C
	83	LEGENDS MARVEL	3451 21C
	84	GRAB 'N' GO	7976 35C
	85	NEW WONDER STORMTROOPER	6462 27C
NEW	86	NEW WONDER CARS 3	6462 27C
NEW	87	NEW WONDER MINNIE BOW	6462 27C
NEW	88	NEW WONDER SPIDER-MAN WEB	6462 27C

GENERAL INFO

	page	
	90	POINT OF SALE MATERIAL
	92	CABIN AIRLINE DIMENSIONS
	94	SHOP IN THE SHOP & DISPLAYS
	95	GENERAL INFO, SYMBOLS & SOCIAL MEDIA



A photograph of a yellow wall and a concrete curb with a green semi-transparent rectangle overlaid in the center. The text "HARD SIDE" is written in white, bold, sans-serif font on the green rectangle.

HARD SIDE

LOCK'N'ROLL™



5 YEAR WARRANTY

Ready to “Lock’n’Roll” to your next destination with this case that is made in Europe? Curved lines, paired with a unique mix of texture and sportive colour accents give Lock’n’Roll a dynamic appearance everywhere you go. Thanks to **American Tourister’s** injection molding experience and innovative engineering, this polypropylene collection represents the perfect synergy of strength and lightness.

Discover one of our bestseller collections and its bright colour palette.

- Made in Europe
- Made from strong and resistant polypropylene material
- Superior lightness & maximum volume thanks to cubic shape
- Smooth rolling double wheels
- Cross ribbons in bottom compartment with zipped lined divider pad





68601 (06G*003): SPINNER 55
40 x 55 x 20 || 37.0 L - 2.7 KG



66983 (06G*001): SPINNER 69
49 x 69 x 29 || 85.0 L - 4.2 KG



66984 (06G*002): SPINNER 75
52 x 75 x 31 || 106.0 L - 4.6 KG



***19**
Jet Black
1465

***31**
Nocturne Blue
2375

***11**
Skydiver Blue
2608

***80**
Summer Pink
4495

***08**
Volt Grey
5198

AIR FORCE 1™

3 YEAR
WARRANTY

Ready to reach for the sky? Our Air Force 1 collection offers all the features that travellers need to rest free from worry and enjoy travelling around the world. Packing a lot won't be a problem anymore, thanks to additional expandability on Spinners® 66 and 76 offering the flexibility to pack more when needed. A contemporary rhomboid shape gives the range a dynamic appearance and design. Choose one of the 4 sportive colours and get away on your next big adventure!

- Made from 100% polycarbonate with textured finishing
- Fixed 3-digit recessed TSA Lock®*
- Voluminous and flexible thanks to the expandability feature
- Ergonomic top and side carry handle



*TSA Lock is a registered Community Trademark of Travel Sentry Inc.

AIR FORCE 1 6610 18G

HARD
SIDE



74401 (18G*001): SPINNER 55
40 x 55 x 20 || 34.0 L - 2.6 KG



74403 (18G*002): SPINNER 66 EXP
46 x 66 x 28/32 || 69/81 L - 3.6 KG



74404 (18G*003): SPINNER 76 EXP
50 x 76 x 29/34 || 96.5/111 L - 4.1 KG



74406 (18G*004): SPINNER 81*
55 x 81 x 33 || 117.0 L - 4.3 KG



* Not available in 4842 (*31) Aero Turquoise



***00**
Flame Red
0501

***09**
Galaxy Black
2576

***01**
Insignia Blue
4424

***31**
Aero Turquoise
4842

AIR FORCE 1 - GRADIENT

3 YEAR
WARRANTY

One of the hot topics in fashion and styling is the Ombré effect, which describes the gradual blending of one colour hue to another, usually moving tints and shades from light to dark. **American Tourister** is including this interesting design element as part of the assortment and surprises us again with this colourful and affordable suitcase range. Based on the great looking Air Force 1 collection, this special execution is made of polycarbonate combined with a printed gradient film, providing a bright finish, easy to recognise on any luggage belt. Features like expandability, smooth rolling double wheels and padded carrying handles, known from the standard Air Force 1 collection, are part of this colourful package. Choose one of the 2 gradient colours and get away on your next adventure!

- Made from 100% polycarbonate with shiny finishing
- Fixed 3-digit recessed TSA Lock
- Voluminous and flexible thanks to the expandability feature
- Ergonomic top and side carry handle



AIR FORCE 1 - GRADIENT 6610 18G

HARD
SIDE



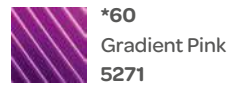
74409 (18G*101): SPINNER 55 GRAD.
40 x 55 x 20 || 34.0 L - 2.6 KG



74410 (18G*102): SPIN. 66 EXP GRAD.
46 x 66 x 28/32 || 69/81 L - 3.6 KG



74411 (18G*103): SPIN. 76 EXP GRAD.
50 x 76 x 29/34 || 96.5/111 L - 4.1 KG



MODERN DREAM™

NEW

3 YEAR WARRANTY

This new urban inspired collection surprises by its contemporary and dynamic look, combining in an elegant way geometric shapes with a play of recessed and flat surfaces. Globetrotters will find all the comfort they need! The expandability feature on Spinner 69 and 78 ensures maximal volume and capacity for your next trip. This elegant design comes in 2 different finishes: a textured finish for additional protection against scratches and a smooth finish for the extra colour pop. Choose one of the 6 in vogue colours and be ready to take off!

- Made from 100% polycarbonate with a matte finishing touch
- 2 different shell finishes
- Fixed 3-digit recessed TSA Lock on top
- Expandability feature on sizes Spinner 69 and 78 provides extra volume
- Double wheels with a matching colour wheel cap ensure smooth rolling comfort





110079 (55G*001): SPINNER 55
40 x 55 x 20 || 35.0 L - 2.6 KG



110081 (55G*002): SPINNER 69 EXP
45,5 x 68,5 x 29/33 || 70/81 L - 3.7 KG



110082 (55G*003): SPINNER 78 EXP
50,5 x 77,5 x 30/34 || 100/114 L - 4.4 KG



***16**
Rose Gold
4357

***86**
Copper Orange
7341

***24**
Emerald Green
1327

***41**
True Navy
3404

***19**
Universe Black
2480

***20**
Wine Red
1919

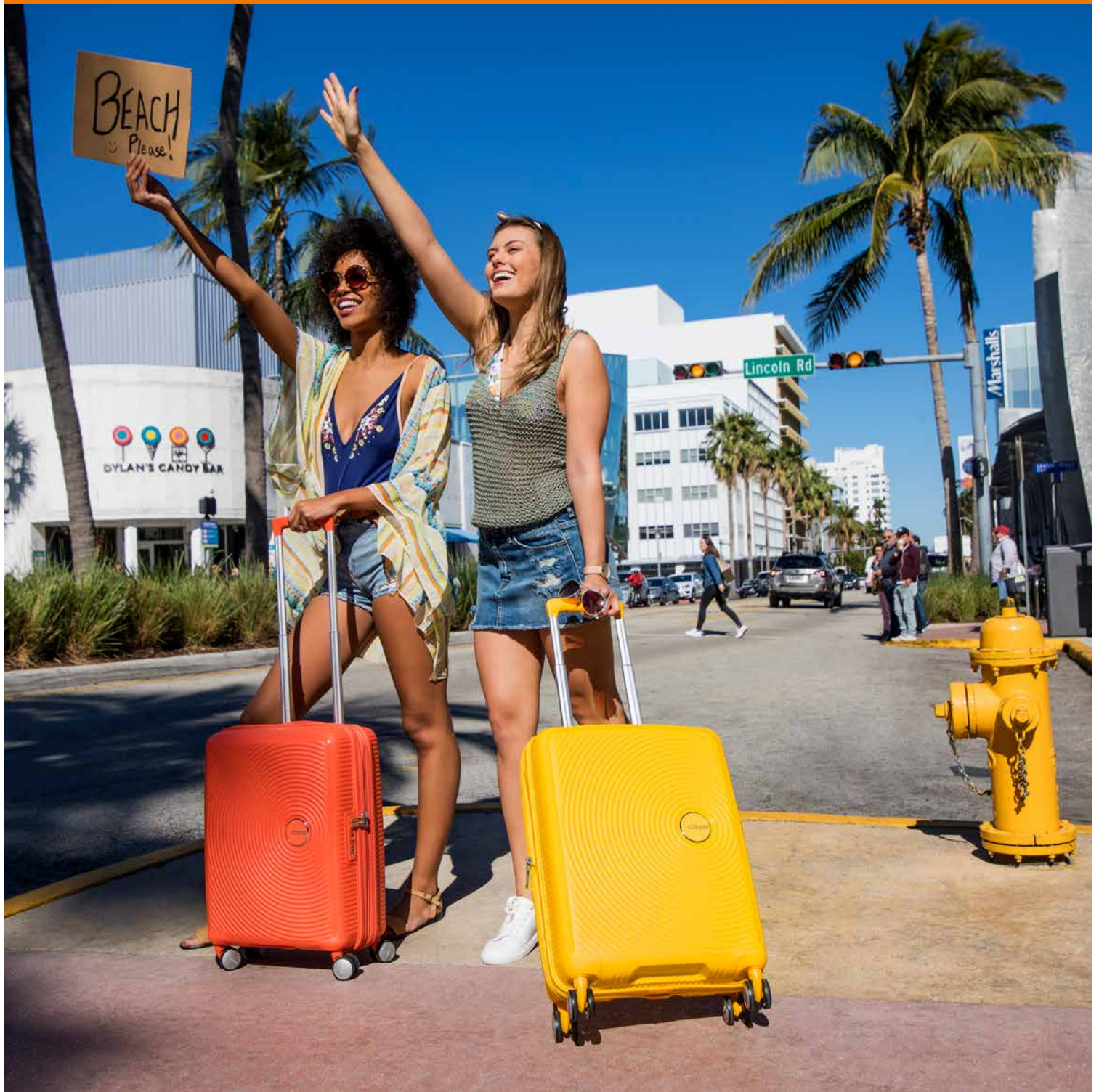
SOUNDBOX™

POS

3 YEAR WARRANTY

Inspired by the beat of the world, SoundBox is our trendy polypropylene collection, featuring an impactful concentric circle design that takes inspiration from retro vinyl records. It is the first **American Tourister** zipped polypropylene case with expandability, providing the flexibility to increase your packing space to store the most exotic souvenirs from around the world. The line is now renewing its colour palette with 4 new summery and bright colours. Feel the sound and travel light with our SoundBox collection.

- First expandable **American Tourister** zipped polypropylene case
- Expandability feature offers maximum capacity
- Light and resistant thanks to the polypropylene material
- Fixed 3-digit recessed TSA Lock
- Double wheels for smooth rolling comfort





88472 (32G*001): SPINNER 55 EXP
40 x 55 x 20/23 || 35.5/41 L - 2.6 KG



88473 (32G*002): SPINNER 67 EXP
46,5 x 67 x 29/32 || 71.5/81 L - 3.7 KG



88474 (32G*003): SPINNER 77 EXP
51,5 x 77 x 29,5/32,5 || 97/110 L - 4.2 KG



***66** NEW
Spicy Peach
7067

***11** NEW
Denim Blue
1292

***34** NEW
Deep Mint
2535

***06** NEW
Golden Yellow
1371

***09**
Bass Black
1027

***41**
Midnight Navy
1552

***05**
Pure White
2343

***01**
Summer Blue
4497

***90**
Lightning Pink
5502

SUNSIDE™

NEW

3 YEAR WARRANTY

Get a taste of the sun and travel around the globe with **American Tourister's** stylish Sunside range. Sunside is our latest polypropylene collection, featuring expandability on Spinner 68 and 77, allowing you to increase your packing storage and fit all your belongings. Thanks to comfortable features like smooth rolling double wheels, a complete interior organisation and recessed TSA Lock on all sizes, Sunside will be the perfect companion for all your future holidays. Choose one of the 6 colours and enjoy the sun with our new Sunside collection!

- Expandability feature on Spinner 68 and 77 offers maximum storage capacity
- Lightweight luggage thanks to innovative design and engineering
- Great organisation thanks to cross ribbons in top and bottom compartment
- Double wheels for smooth rolling comfort
- Fixed 3-digit recessed TSA Lock to keep all your belonging safe and secure





107526 (51G*001): SPINNER 55
40 x 55 x 20 || 35.0 L - 2.5 KG



107527 (51G*002): SPINNER 68 EXP
46 x 67,5 x 28,5/32 || 72.5/83.5 L - 3.7 KG



107528 (51G*003): SPINNER 77 EXP
50 x 77 x 31/35 || 106/118 L - 4.5 KG



***21**
Aero Turquoise
4842

***41**
Navy
1596

***06**
Sunshine Yellow
1844

***09**
Black
1041

***00**
Sunset Red
0409

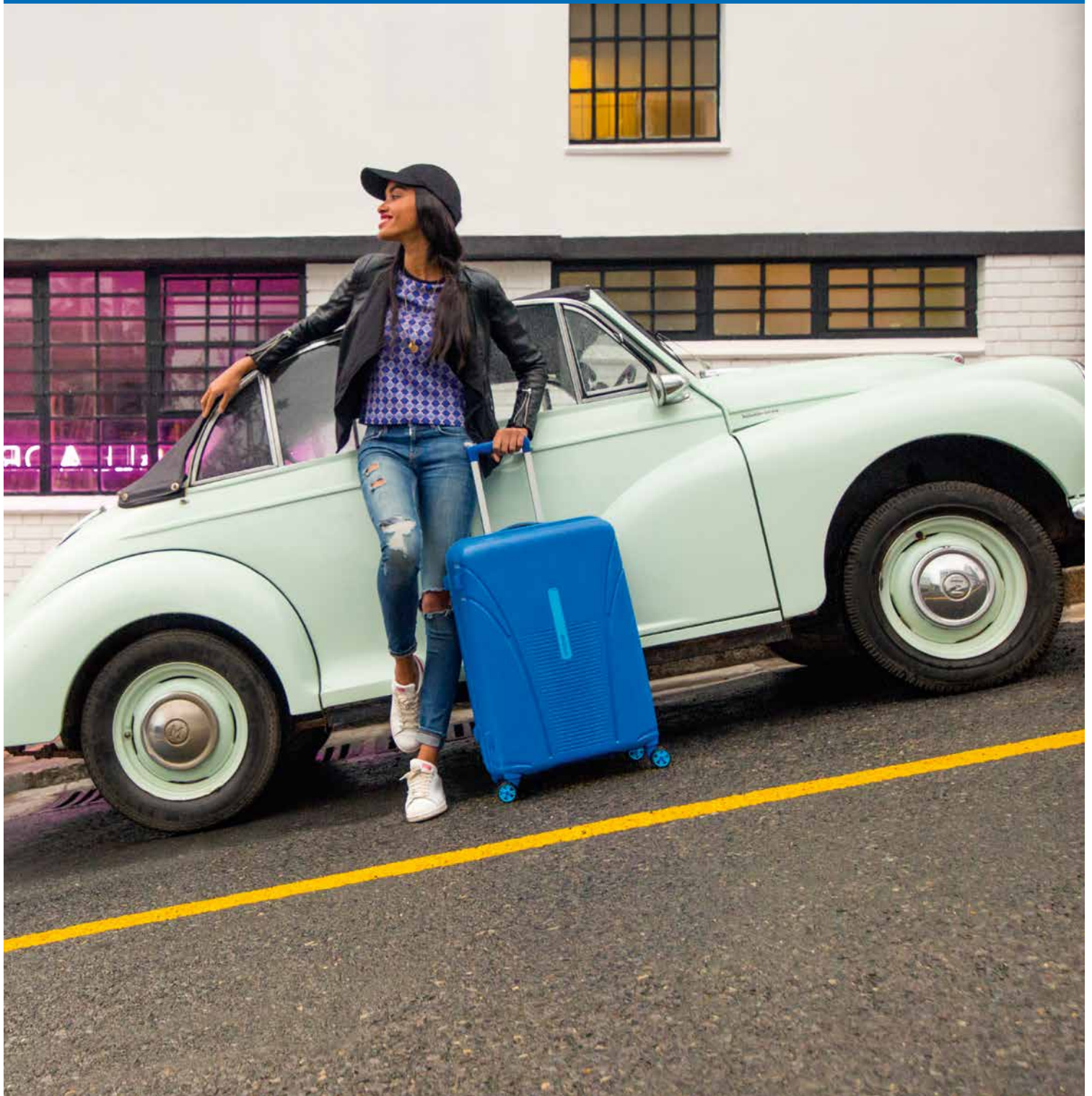
***91**
Ultraviolet
1888

SKYTRACER™

3 YEAR
WARRANTY

Skytracer is the next generation of zipped polypropylene cases which combines extreme strength with superior lightness. The dynamic design, inspired by latest technology trends, combines a protective matte texture with shiny curved lines. Its appealing look is accentuated by contemporary dégradé lines on the front, while vivid and sportive colours make this collection an eye-catcher in every airport and hotel lobby. Functional features such as double wheels and recessed TSA Lock ensure you are prepared for every adventure to come.

- Made from 100% polypropylene material
- Comfortable soft touch top and side carry handle
- Fixed 3-digit recessed TSA Lock
- Double wheels for smooth rolling comfort
- Cross ribbons in top and bottom compartment





76526 (22G*001): SPINNER 55
40 x 55 x 20 || 32.0 L - 2.6 KG



76527 (22G*002): SPINNER 68
46,5 x 68 x 26 || 63.0 L - 3.4 KG



76528 (22G*003): SPINNER 77
50,5 x 77,5 x 30 || 94.0 L - 4.3 KG



76529 (22G*004): SPINNER 82*
55 x 82 x 34 || 120.0 L - 4.8 KG



* Not available in 4420 (*04) Spring Green and 0507 (*00) Formula Red



***00**
Formula Red
0507

***08**
Dark Slate
1269

***04**
Spring Green
4420

***01**
Highline Blue
5275

BON AIR™

POS

Our best-selling hardside collection Bon Air keeps renewing its colour palette and is now available in 3 new and trendy colours: Azalea Pink, Lavender Purple and Emerald Green, giving our Bon Air collection a contemporary and fashionable touch! With 10 vibrant colours to choose from, there is for sure one for every mood.

- Extremely strong 100% polypropylene zipped suitcase
- Super lightweight luggage thanks to innovative design and engineering
- Fixed 3-digit TSA Lock for added security
- Large volume and great organisation with multiple pockets and fixation straps
- 360° Spinner wheels for smooth rolling comfort





59422 (85A*001): SPINNER S STRICT
40 x 55 x 20 || 31.5 L - 2.5 KG



59423 (85A*002): SPINNER M
46 x 66 x 25,5 || 57.5 L - 3.4 KG



59424 (85A*003): SPINNER L
54 x 75 x 29 || 91.0 L - 4.2 KG



***40** NEW
Azalea Pink
6818

***32** NEW
Lavender Purple
2885

***54** NEW
Emerald Green
1327

***22**
Seaport Blue
3870

***06**
Solar Yellow
0624

***09**
Black
1041

***20**
Magma Red
0554

***41**
Midnight Navy
1552

***05**
White
1908

***31**
Deep Turquoise
4517

WAVEBREAKER™

3 YEAR
WARRANTY

Inspired by the freedom of travelling, WaveBreaker features a dynamic and contemporary design inspired by nature, with gradually fading lines on the front panel. The collection, enhanced by its dotted texture, helps to protect the surface against scratches. The rich looking double wheels make travelling easy and provide a smooth rolling comfort. Enjoy our *American Tourister* collection everywhere you go!

- 2 new prints added to this collection: Neon Palms & Chalkboard
- Fixed 3-digit TSA Lock
- Cross ribbons, zipped divider and apron pocket allow easy storing
- Unique design with textured surface helping to protect against scratches*

* Print versions with shiny finish only





74133 (15G*001): SPINNER 55
40 x 55 x 20 || 36.0 L - 2.6 KG



74136 (15G*004): 2 PC SET A*
contains
SPINNER 55
40 x 55 x 20 || 36.0 L - 2.6 KG
SPINNER 77
52 x 77 x 29 || 96.0 L - 4.2 KG



74137 (15G*005): 3 PC SET A
contains
SPINNER 55
40 x 55 x 20 || 36.0 L - 2.6 KG
SPINNER 67
47 x 67 x 26 || 64.0 L - 3.6 KG
SPINNER 77
52 x 77 x 29 || 96.0 L - 4.2 KG



* Only available in 0576 (*28) Nightshade and 4436 (*01) Nautical Blue



***84** NEW
Neon Palms
7306



***69** NEW
Chalkboard
7307



***90**
Hot Lips Pink
B198



***28**
Nightshade
0576



***06**
Sunny Yellow
1839



***21**
Summer Sky
2302



***01**
Nautical Blue
4436

WAVEBREAKER X CEIZER™

NEW

3 YEAR
WARRANTY

American Tourister is happy to introduce our newest collaboration with Ceizer, a young Dutch artist living in Paris. This artist incorporates humour, fun and typographic flair into all of his work. Taking our successful WaveBreaker design, he has composed a Limited Edition print, creating a unique, stylish and daring range. Get inspired and make your next trip even more special!

- Limited Edition
- Unique design created by Ceizer
- Personalised interior
- Double wheels and TSA Lock on all sizes



WAVEBREAKER X CEIZER 9301 58G

HARD
SIDE



110812 (58G*001): SPINNER 55
40 x 55 x 20 || 36.0 L - 2.6 KG



110815 (58G*004): 3 PC SET A
contains

SPINNER 55
40 x 55 x 20 || 36.0 L - 2.6 KG



SPINNER 67
47 x 67 x 26 || 64.0 L - 3.6 KG



SPINNER 77
52 x 77 x 29 || 96.0 L - 4.2 KG



*02
SMILEY FUN
7391

TRACKLITE™

3 YEAR
WARRANTY

Tracklite takes inspiration from the latest trends in industrial design, to create an appealing and highly commercial suitcase collection characterised by vertical faded lines. The range offers maximum capacity thanks to its expandability feature offering a best in class value for money ratio. Follow the adventure track and choose one of the 4 colours!

- Expandability feature on Spinner 67 and 78
- Fixed 3-dial TSA Lock on Spinner 67 and 78
- Double wheels for smooth rolling comfort





88742 (34G*001): SPINNER 55
40 x 55 x 20 || 34.0 L - 2.6 KG



88745 (34G*002): SPINNER 67 EXP
44,5 x 67 x 27/31 || 71/82 L - 3.8 KG



88752 (34G*003): SPINNER 78 EXP
50 x 78 x 30/34 || 105/120 L - 4.4 KG



Only TSA Lock on Spinner 67 & Spinner 78



***00**
Flame Red
0501

***08**
Dark Slate
1269

***01**
Sky Blue
1809

***74**
Sunny Lime
1838

MIGHTY MAZE™

NEW

3 YEAR
WARRANTY

Mighty Maze features a dynamic design with box-shaped lines on both sides and protects the surface by its scratch-resistant texture. This collection stands out with its industrial look and feel and is the perfect companion for all globetrotters! Perfectly executed with comfortable features, this range will make travelling easy and more fun. Choose one of the 4 colours and be ready to explore the globe!

- Industrial design with textured surface helps to protect your suitcase against scratches
- Cross ribbons in bottom compartment and zipped divider allow easy packing
- Fixed 3-dial TSA Lock on all sizes
- Elegant logo plate





109614 (53G*001): SPINNER 55
40 x 55 x 20 || 33.0 L - 2.4 KG



109615 (53G*002): SPINNER 67
50,5 x 67,5 x 29 || 72.0 L - 3.3 KG



109616 (53G*003): SPINNER 78
56,5 x 78,5 x 32 || 115.0 L - 4.5 KG



***21**
Turquoise
1879

***41**
Navy
1596

***00**
Red
1726

***09**
Black
1041



L I V E





SOFT SIDE



AIRBEAT™

3 YEAR
WARRANTY

AirBeat is our latest feature-rich collection that combines contemporary design with sportswear inspired detailing to create a versatile and resistant piece of luggage. The functional front pocket with “door” opening on all check-in sizes allows for easy access last minute packing. AirBeat offers a complete assortment including a selection of travel Duffle bags, making it your perfect travel companion, both on and off the road.

- Super light
- Fully organised interior
- Smart buckle fixation for elastic cross ribbons
- Recessed TSA Lock
- Expandability on selected models
- Smooth rolling double wheels on Spinner models





103005 (45G*007): DUFFLE 55*
55 x 31,5 x 29 || 51.5 L - 0.8 KG



2 year warranty



103004 (45G*006): DUFFLE/WH 76*
37 x 76 x 34 || 86.0 L - 2.9 KG



102998 (45G*001): UPRIGHT 55 EXP
40 x 55 x 20/23 || 43/48 L - 2.1 KG



102999 (45G*002): SPINNER 55 EXP
40 x 55 x 20/23 || 40/43 L - 2.4 KG



103000 (45G*003): SMART SPINNER 55**
40 x 55 x 20 || 39.0 L - 2.2 KG



103001 (45G*004): SPINNER 68 EXP
43 x 68,5 x 27/29 || 69.5/75 L - 2.8 KG



103003 (45G*005): SPINNER 80 EXP
47 x 80 x 30/32 || 104/112 L - 3.2 KG



* Only available in 2480 (*09) Universe Black and 3404 (*41) True Navy

** Only available in 2480 (*09) Universe Black



***01**
Sky Blue
1809

***00**
Pure Red
2010

***09**
Universe Black
2480

***41**
True Navy
3404

HEROLITE™

3 YEAR
WARRANTY

American Tourister is yet again challenging the status quo, with our Herolite collection starting at an incredible weight of only 1.5 kg for the Upright® 55. Thanks to an innovative construction, using fiberglass pultrusions and polypropylene injected reinforcements, Herolite surprises with incredible lightness while offering superior strength. The contemporary design, paired with bright colour accents, matches the playful spirit of young travellers and comes now in one bright new colour Mighty Blue. Beat the routine and travel lighter than ever on your next journey!

- Extreme lightness: from 1.5 kg for the Upright 55
- Improved functionality: 2 big front pockets
- 2 design executions give you more choice
- Ergonomic and flat side handle
- TSA key padlock





80378 (26G*008): HANG. TOILET KIT*
27 x 24,5 x 9 || 7.0 L - 0.3 KG



2 year warranty



80370 (26G*001): SUPER LIGHT UPR. 55
40 x 55 x 20 || 41.0 L - 1.5 KG



80371 (26G*002): SUPER LIGHT SPIN. 55
40 x 55 x 20 || 42.0 L - 1.5 KG



80372 (26G*003): SUPER LIGHT SPIN. 55 EXP
35 x 55 x 20/25 || 38/42 L - 1.6 KG



80374 (26G*005): SUPER LIGHT SPIN. 67
43 x 67 x 26 || 68.0 L - 2.0 KG



80375 (26G*006): SUPER LIGHT SPIN. 74
47,5 x 74 x 29 || 95.0 L - 2.2 KG



80376 (26G*007): DUFFLE/WH 79**
39 x 79 x 33 || 84.0 L - 2.4 KG



* Not available in 4219 (*04) Cactus Green and 4872 (*11) Mighty Blue

** Not available in 4219 (*04) Cactus Green, 0507 (*00) Formula Red and 4872 (*11) Mighty Blue



***11** NEW
Mighty Blue
4872

***09**
Volcanic Black
0662

***04**
Cactus Green
4219

***00**
Formula Red
0507

***01**
Midnight Blue
1549

HEROLITE LIFESTYLE™

3 YEAR
WARRANTY

The Lifestyle Edition of our Herolite collection is a modern interpretation of lightweight luggage. A contemporary fabric mix provides the range with a unique and distinctive look, while the innovative construction, using fiberglass and polypropylene injected reinforcements, results in incredible lightness and superior strength. Be stylish and travel lighter than ever on your next journey!

- Contemporary fabric mix
- Improved functionality: 2 big front pockets
- Ergonomic and flat side handle
- TSA key padlock





80432 (26G*101): LIFESTYLE UPR. 55
40 x 55 x 20 || 41.0 L - 1.6 KG



80433 (26G*102): LIFESTYLE SPIN. 55
40 x 55 x 20 || 42.0 L - 1.7 KG



80434 (26G*103): LIFESTYLE SPIN. 55 EXP
35 x 55 x 20/25 || 38/42 L - 1.6 KG



80435 (26G*105): LIFESTYLE SPIN. 67
43 x 67 x 26 || 68.0 L - 2.1 KG



80436 (26G*106): LIFESTYLE SPIN. 74
47,5 x 74 x 29 || 95.0 L - 2.4 KG



***41**
Navy
1596

***10**
Pomegranate
5929

SUMMER VOYAGER™

3 YEAR
WARRANTY

Summer Voyager is a well featured softside range, ideal for the global explorer and value-conscious traveller. A rich and resistant polyester mix is wrapped up in a sleek and modern design while a variety of functional features ensure smooth travelling and packing all around the globe. Thanks to its mainstream design, Summer Voyager is the range for everybody who loves travelling. Choose one of our 2 new bright and summery colours, Peacock and Deep Pink and be ready to discover the world!

- High functionality paired with a resistant look
- Fully featured interior including cross ribbons in top and bottom compartment
- Expandability on selected models
- Spinners feature double wheels to ensure smooth rolling comfort
- Fixed TSA Lock for added security





85465 (29G*008): BEAUTY CASE*
32,5 x 30 x 19 || 15.0 L - 0.6 KG



2 year warranty



85464 (29G*007): 3-WAY BOARDING BAG**
40 x 30 x 20 || 26.0 L - 0.7 KG



2 year warranty



85458 (29G*001): UPRIGHT 55***
40 x 55 x 20 || 38.5 L - 2.5 KG



85459 (29G*002): SPINNER 55
40 x 55 x 20 || 36.0 L - 2.6 KG



85461 (29G*004): SPINNER 68 EXP
43 x 68 x 28/30 || 67.5/76 L - 3.3 KG



85462 (29G*005): SPINNER 79 EXP
47 x 79 x 32/34 || 112/123 L - 3.9 KG



85463 (29G*006): DUFFLE/WH 81****
44 x 81 x 34 || 104.0 L - 3.2 KG



* Not available in 5198 (*08) Volt Grey

** Only available in 1549 (*01) Midnight Blue, 5197 (*09) Volt Black and 1748 (*00) Ribbon Red

*** Not available in 1283 (*90) Deep Pink and 1671 (*21) Peacock

**** Only available in 1549 (*01) Midnight Blue and 5197 (*09) Volt Black



***90 NEW**
Deep Pink
1283

***21 NEW**
Peacock
1671

***01**
Midnight Blue
1549

***00**
Ribbon Red
1748

***09**
Volt Black
5197

***08**
Volt Grey
5198

SONICSURFER™

3 YEAR
WARRANTY

American Tourister demonstrates yet again its strength for innovative and contemporary design, with our SonicSurfer collection. This ingenious collection comes with a casual attitude thanks to a rich mélange fabric, emphasised with elegant quilted stitching and subtle colour accents. The characteristic side panel, made from EVA, provides a state-of-the-art look and additional strength. Don't miss out on being stylish on the move and get your SonicSurfer case now.

- Super light
- Innovative construction with EVA side panel
- TSA Lock: padlock or integrated fixed lock, depending on model
- Smooth rolling double wheels on Spinner models
- Organised interior





103026 (46G*005): LAPTOP BAG 15.6"
43,5 x 30 x 10,5 || 15.0 L - 0.5 KG
 ** 37,5 x 26 x 3,5
 *** 27 x 19 x 1,7
 ☞ 25,7 cm/10.1" ☞ 39,6 cm/15.6"
 ☞ ☞ ☞
 2 year warranty



103028 (46G*006): LAPTOP BACKP. 15.6"
30,5 x 44,5 x 21,5 || 24.5 L - 0.6 KG
 ** 26 x 37,5 x 3,5
 *** 19 x 27 x 1,7
 ☞ 25,7 cm/10.1" ☞ 39,6 cm/15.6"
 ☞ ☞ ☞
 2 year warranty



103020 (46G*001): UPRIGHT 55
40 x 55 x 20 || 43.0 L - 2.3 KG
 ☞ ☞ ☞



103023 (46G*002): SPINNER 55
40 x 55 x 20 || 40.0 L - 2.3 KG
 ☞ ☞ ☞



103024 (46G*003): SPINNER 68 EXP
44 x 68 x 28/31,5 || 74.5/83.5 L - 3.2 KG
 TSA ☞ ☞



103025 (46G*004): SPINNER 80 EXP
46 x 80,5 x 31,5/35 || 110/125 L - 3.8 KG
 TSA ☞ ☞

* Not available in 1540 (*08) Metal Grey

** Maximum laptop size

*** Maximum tablet size



***08**
 Metal Grey
1540

***41**
 Midnight Navy
1552

***18**
 Dark Shadow
4790

SONICSURFER LIFESTYLE™

3 YEAR
WARRANTY

The special Lifestyle Edition of SonicSurfer comes with a fashionable herringbone fabric, combined with leather look details, giving the collection an authentic heritage design. The characteristic side panel in EVA keeps the contemporary identity of the collection and provides additional protection and strength.

- Super light
- Innovative construction with EVA side panel on Spinner
- Leather look details
- Selection of bags available to complete the urban casual look





103023 (46G*002): SPINNER 55
40 x 55 x 20 || 40.0 L - 2.3 KG



103028 (46G*006): LAPTOP BACKP. 15.6"

30,5 x 44,5 x 21,5 || 24.5 L - 0.6 KG

** 26 x 37,5 x 3,5

*** 19 x 27 x 1,7

☞ 25,7 cm/10.1" ☞ 39,6 cm/15.6"



2 year warranty



103026 (46G*005): LAPTOP BAG 15.6"

43,5 x 30 x 10,5 || 15.0 L - 0.5 KG

** 37,5 x 26 x 3,5

*** 27 x 19 x 1,7

☞ 25,7 cm/10.1" ☞ 39,6 cm/15.6"



2 year warranty

** Maximum laptop size

*** Maximum tablet size



***28**
Herringbone
2355

HOLIDAY HEAT™

NEW

3 YEAR
WARRANTY

Inspired by the heat of the sun, Holiday Heat brings the global explorer all the comfort they need. This new collection has a contemporary and sportive look, paired with bright and colourful accents and comes at a great value for money ratio. Comfortable features like 2 front pockets and cross ribbons in the bottom compartment make packing more easy and organised. The range is completed with 2 different cabin size Upright 55, allowing you to choose the ideal cabin size suitcase for your next trip. Bring on the heat and choose one of the 5 colours to complete your next holiday!

- Improved cabin size offer with new Upright 55 Length 35 (55x35x25cm)
- Fixed TSA Lock on check-in sizes
- Great interior allows clever and easy storing
- Stitching and piping in accent colour





106792 (50G*002): UPRIGHT 55 LENGTH 35CM
35 x 55 x 25 || 39.0 L - 2.5 KG



106793 (50G*003): UPRIGHT 55
40 x 55 x 20 || 42.0 L - 2.5 KG



106794 (50G*004): SPINNER 55
40 x 55 x 20 || 38.0 L - 2.6 KG



106795 (50G*005): SPINNER 67
44 x 67 x 27,5 || 66.0 L - 3.2 KG



106796 (50G*006): SPINNER 79
46,5 x 79,5 x 32 || 108.0 L - 3.8 KG



***08**
Metal Grey
1540

***01**
Denim Blue
1292

***09**
Black
1041

***91**
Lavender Purple
2885

***41**
Navy
1596

FUNSHINE™

3 YEAR
WARRANTY

Chase the sunshine around the world with **American Tourister's** softside collection, Funshine! The clean front panel design is accentuated by an appealing coloured stitching and accent piping, providing the line with a contemporary and playful design. Thanks to its big volume, this line is ideal for heavy packers who look for a stylish and affordable suitcase. The 2 fresh summer colours will make sure you stand out on every trip!

- Maximised volume thanks to boxy shape and functional front pocket in all sizes
- Fixed 3-dial combination lock
- Elastic cross ribbons and mesh pocket
- 2 new colours: Mandarinina and Aqua Green with contrasting piping and stitching





75506 (20G*001): UPRIGHT 55
40 x 55 x 20 || 39.0 L - 2.5 KG



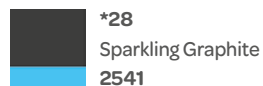
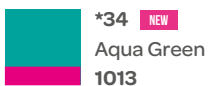
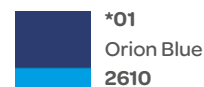
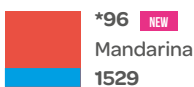
75507 (20G*002): SPINNER 55
40 x 55 x 20 || 36.0 L - 2.5 KG



75508 (20G*003): SPINNER 66
43 x 66 x 27 || 63.5 L - 3.3 KG



75509 (20G*004): SPINNER 79
46 x 79 x 31 || 99.5 L - 3.9 KG



LITEWING™

3 YEAR
WARRANTY

Enjoy the fun of LiteWing, our surprisingly light softside collection. Especially developed for travellers who want to enjoy their trip free from worries of heavy luggage, this line offers a wide range of extremely light cabin size items in a contemporary, soft and sportive look. LiteWing includes the essential features, such as cross ribbons, TSA padlock and additional easy-access pockets, so pick up one of these trendy cases and travel lighter than ever!

- TSA key padlock
- Extreme lightness, starting at 1.4 kg
- Sportive design thanks to the ripstop fabric





89456 (38G*001): UPRIGHT 55
40 x 55 x 20 || 40.0 L - 1.4 KG



89457 (38G*002): SPINNER 55
40 x 55 x 20 CM || 41.0 L - 1.5 KG



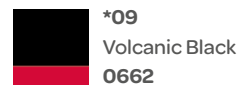
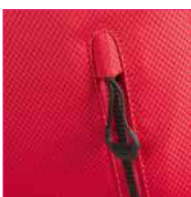
89458 (38G*003): SPINNER 55 EXP
35 x 55 x 23/25 || 38/42 L - 1.5 KG



89459 (38G*004): SPINNER 70
42 x 70 x 26 || 67.0 L - 2.4 KG



89460 (38G*005): SPINNER 81
47 x 81 x 29 || 99.0 L - 2.7 KG



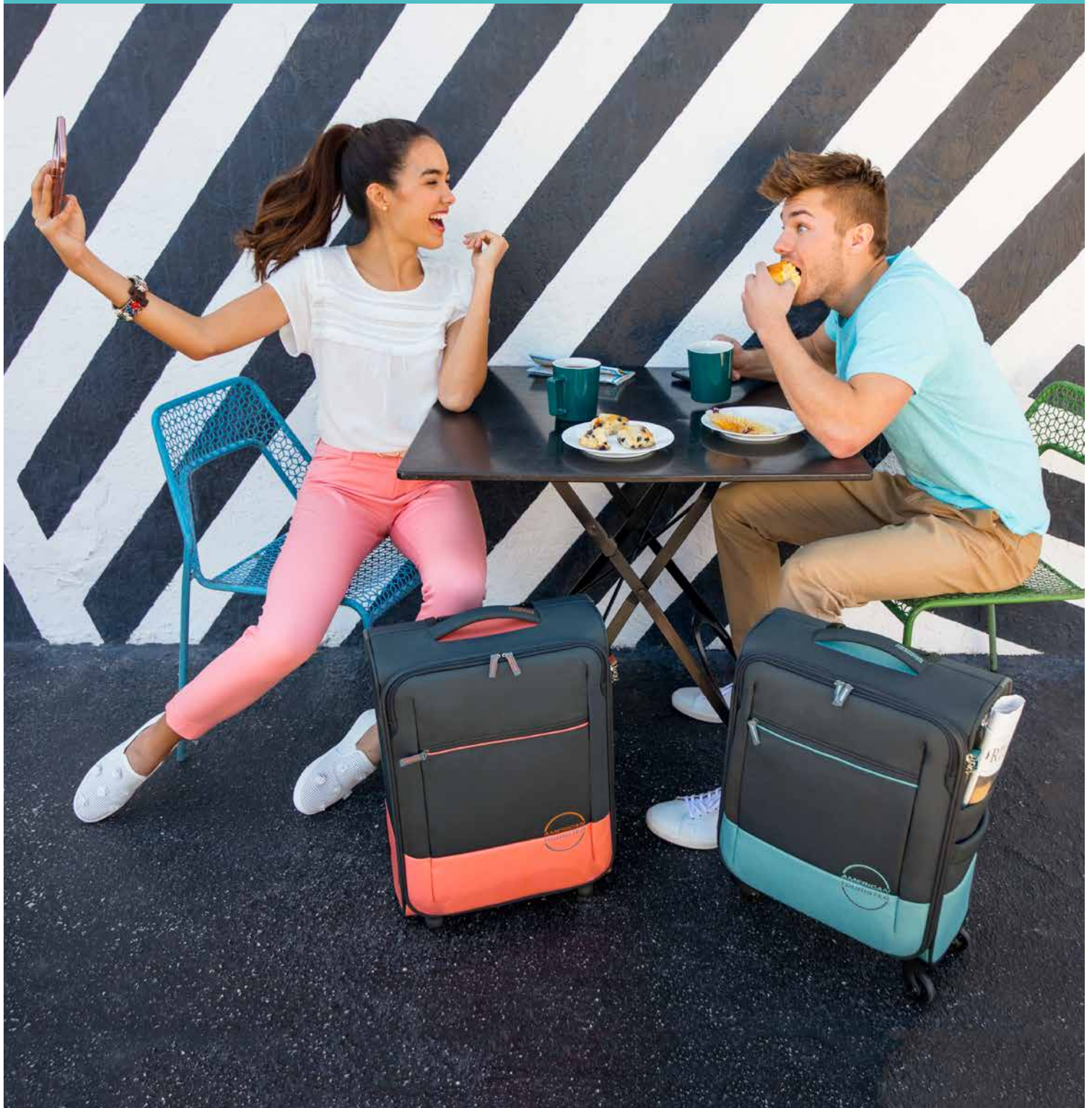
INSTAGO™

NEW

3 YEAR WARRANTY

American Tourister introduces the latest softside range, InstaGo, combining a contemporary yet sportive design with interesting details. The collection offers a unique look thanks to the interesting material mix of polyester and coated polyester, offering additional resistance and a sportive logo print. InstaGo offers you lots of travel comfort, with an additional side pocket on cabin sizes for easy access to your documents and magazines at the airport. All this and much more will make your journey even more enjoyable.

- Contemporary and sportive design
- Material mix featuring coated polyester
- Large U-shape front pocket with additional flat pocket
- Side pocket on cabin size for magazines etc.
- Side handle on all sizes
- TSA Lock on check-in sizes





109791 (54G*001): UPRIGHT 55
40 x 55 x 20 || 41.5 L - 2.3 KG



109792 (54G*002): SPINNER 55
40 x 55 x 20 || 39.5 L - 2.4 KG



109793 (54G*003): SPINNER 68
44 x 68 x 27,5 || 66.0 L - 3.0 KG



109794 (54G*004): SPINNER 81
46 x 81 x 31 || 98.5 L - 3.5 KG



***28**
Grey/Peach
7303

***19**
Black/Dark Grey
2454

***51**
Navy/Bright Blue
T325

***18**
Grey/Aqua
7302

SKYGLIDER™

NEW

3 YEAR WARRANTY

Skyglider is *American Tourister's* first Hybrid collection, combining the best of both worlds: strong as a Hardside case and Flexible as a Soft case. Its streamlined design in combination with polycarbonate side panels offer extra protection and maximal volume. Thanks to the comfortable split case construction for best-in-class weight distribution, Skyglider will let you glide at ease to your next destination!

- First Hybrid collection combining Hardside and Softside material
- Reinforced side panels with polycarbonate
- Recessed TSA Lock on all sizes
- Expandability feature on Spinner M and L
- Double wheels for smooth rolling comfort





110080 (57G*001): SPINNER 55
40 x 55 x 20 || 32.0 L - 3.0 KG



110083 (57G*002): SPINNER 66 EXP
48 x 66 x 27/31 || 74/82.5 L - 3.6 KG



110084 (57G*003): SPINNER 76 EXP
52 x 76 x 30/34 || 108/120 L - 4.5 KG



***09**
Jet Black
1465

***01**
City Blue
2340

***00**
Formula Red
0507





CASUAL

ROAD QUEST™

3 YEAR
WARRANTY

Road Quest is the perfect companion for travels where you need to pack as much as possible without losing focus on functionality. This year we enlarge the assortment with a variety of new sportive models and colours, tough looking thanks to coated materials and elastic straps. Take advantage of this functional and good value range to travel across the world.

- Great casual design with 2 types of wheeled Duffles
- 2 compartment Duffles with double deck construction and compression straps for easy packing
- New Duffles in 3 sizes and Laptop Backpack 15.6" now available in 4 new colours
- All Duffles stand upright thanks to reinforcement in the bottom area





74144 (16G*007): CROSS-OVER
21 x 27 x 8 || 5.0 L - 0.2 KG

2 year warranty

1817 (*09) Solid Black



74147 (16G*010): SPORTSBAG
50 x 27 x 32 || 38.0 L - 0.6 KG



2 year warranty

1817 (*09) Solid Black

4167 (*18) Grey/Turquoise



89442 (16G*012): LAPTOP BACKPACK/WH 15.6"
36 x 53 x 26 || 35.0 L - 2.3 KG

** 26 x 37,5 x 3,5
39,6 cm/15,6"

1817 (*09) Solid Black

4167 (*18) Grey/Turquoise



74138 (16G*001): 2 COMP. DUFFLE/WH 55
40 x 55 x 20 || 40.0 L - 2.7 KG



74139 (16G*002): 2 COMP. DUFFLE/WH M
38 x 69 x 29 || 62.5 L - 3.0 KG



74140 (16G*003): 2 COMP. DUFFLE/WH L
41 x 80 x 31 || 88.0 L - 3.4 KG



1817 (*09) Solid Black

4167 (*18) Grey/Turquoise



NEW

107659 (16G*016): LAPTOP BACKPACK M 15.6"
31 x 47,5 x 23,5 || 28.0 L - 0.6 KG

** 26 x 37,5 x 3,5
39,6 cm/15,6"



2 year warranty

0490 (*21) Deep Water Blue

1062 (*29) Black/Grey

7122 (*28) Graphite/Turquoise

7123 (*38) Graphite/Pink



NEW

107656 (16G*013): DUFFLE/WH 55
34 x 55 x 26 || 42.0 L - 2.0 KG



0490 (*21) Deep Water Blue

1062 (*29) Black/Grey

7122 (*28) Graphite/Turquoise

7123 (*38) Graphite/Pink



NEW

107657 (16G*014): DUFFLE/WH M
39 x 67 x 30 || 75.0 L - 2.4 KG



107658 (16G*015): DUFFLE/WH L
43 x 79 x 36 || 114.0 L - 2.8 KG



0490 (*21) Deep Water Blue

1062 (*29) Black/Grey

7122 (*28) Graphite/Turquoise

7123 (*38) Graphite/Pink

URBAN GROOVE™

Hands-free mobility, athleisure and casualisation are the main trends supporting the current backpack growth. To continue the success of Urban Groove, **American Tourister** expands its range of versatile college and leisure backpacks. Thanks to diverse designs, features and colours, this collection is satisfying multiple consumer demands – from a daily backpack for leisure time and college, a sophisticated office backpack, to a more urban lifestyle approach. Choose your style and groove on!

- Padded laptop compartment with elastic fixation strap on selected models only
- Multiple compartments for better organisation and easy storage
- Ergonomic and padded back panels provide carrying comfort
- Selected models feature a rain cover for additional protection
- Extreme lightness





NEW

107228 (24G*017): UG SPORTIVE DUFFLE
50 x 29,5 x 26,5 || 36.5 L - 0.4 KG



- 1090 (*01) Blue
- 1408 (*08) Grey



78825 (24G*001): UG1 BACKPACK
31,5 x 44 x 24 || 29.0 L - 0.4 KG



- 1041 (*09) Black



78826 (24G*002): UG2 LAPT. BACKPACK 14.1"
30,5 x 45 x 22,5 || 24.0 L - 0.5 KG

** 24,1 x 34,3 x 3,3
35,6 cm/14.1"



- 1041 (*09) Black
- 1726 (*00) Red NEW



78827 (24G*003): UG3 LAPT. BACKPACK 15.6"
30,5 x 45 x 23 || 25.0 L - 0.5 KG

** 26 x 37,5 x 3,5
39,6 cm/15.6"



- 1041 (*09) Black
- 1726 (*00) Red



78828 (24G*004): UG4 LAPT. BACKPACK 15.6"
32 x 47 x 23 || 27.0 L - 0.5 KG

** 26 x 37,5 x 3,5
39,6 cm/15.6"



- 2642 (*19) Black/Blue
- 2606 (*29) Black/Lime Green
- 1073 (*39) Black/Red NEW



78830 (24G*006): UG6 LAPT. BACKPACK 15.6"
32 x 48 x 23,5 || 26.0 L - 0.6 KG

** 26 x 37,5 x 3,5
39,6 cm/15.6"



- 1041 (*09) Black
- 6290 (*61) True Navy/Lime NEW



78831 (24G*007): UG7 OFFICE BACKPACK 15.6"
33 x 46 x 24 || 26.0 L - 0.7 KG

** 26 x 37,5 x 3,5
39,6 cm/15.6"



- 1041 (*09) Black
- 1090 (*01) Blue



NEW

107229 (24G*018): UG SPORTIVE BP 1
30 x 46,5 x 24,5 || 28.0 L - 0.4 KG



- 2642 (*19) Black/Blue
- 5649 (*21) Light Blue/Lime



NEW

107230 (24G*019): UG SPORTIVE BP 2 15.6"
28,5 x 44 x 24 || 26.5 L - 0.5 KG

** 26 x 37,5 x 3,5
39,6 cm/15.6"



- 4266 (*11) Camo Blue
- L403 (*28) Camo Grey



NEW

107231 (24G*020): UG SPORTIVE BP 3 15.6"
29 x 47 x 26,5 || 32.0 L - 0.7 KG

** 26 x 37,5 x 3,5
39,6 cm/15.6"



- 1408 (*08) Grey



NEW

107232 (24G*021): UG BUSINESS BP 17.3"
31 x 48 x 24 || 27.0 L - 0.7 KG

** 28,7 x 42,2 x 3,8
43,9 cm/17.3"



- 1041 (*09) Black
- 1090 (*01) Blue

URBAN GROOVE LIFESTYLE™

NEW

Hands-free mobility, athleisure and casualisation are the main trends supporting the current backpack growth. To continue the success of Urban Groove, *American Tourister* expands its range of versatile college and leisure backpacks. Thanks to diverse designs, features and colours, this collection is satisfying multiple consumer demands – from a daily backpack for leisure time and college, to a sophisticated office backpack, to a more urban lifestyle approach. Choose your style and groove on!

- Padded laptop compartment with elastic fixation strap on selected models only
- Multiple compartments for better organisation and easy storage
- Ergonomic and padded back panels provide carrying comfort
- Extreme lightness





107259 (24G*022): UG LIFESTYLE BP 1
27,5 x 40 x 20,5 || 23.0 L - 0.4 KG



1062 (*49) Black/Grey

2934 (*31) Blue Floral

5681 (*59) Pop Black

6571 (*02) Popsicle



107263 (24G*023): UG LIFESTYLE BP 2 15.6"
31,5 x 46,5 x 21 || 24.0 L - 0.6 KG

** 26 x 37,5 x 3,5

*** 19 x 27 x 1,7

☞ 25,7 cm/10.1" ☞ 39,6 cm/15.6"



1090 (*01) Blue

1726 (*00) Red



107265 (24G*024): UG LIFESTYLE BP 3 15.6"
33 x 50 x 22 || 27.5 L - 0.6 KG

** 26 x 37,5 x 3,5

*** 19 x 27 x 1,7

☞ 25,7 cm/10.1" ☞ 39,6 cm/15.6"



7104 (*12) Camo Cartoon

6532 (*41) Navy/Red



107266 (24G*025): UG LIFESTYLE BP 4 17.3"
30,5 x 49,5 x 23 || 28.0 L - 0.7 KG

** 28,7 x 42,2 x 3,8

*** 19 x 27 x 1,7

☞ 25,7 cm/10.1" ☞ 43,9 cm/17.3"



6871 (*14) Green/Orange

6532 (*41) Navy/Red



107267 (24G*026): UG LIFESTYLE BP 5 17.3"
31,5 x 45 x 21,5 || 28.0 L - 0.6 KG

** 28,7 x 42,2 x 3,8

*** 19 x 27 x 1,7

☞ 25,7 cm/10.1" ☞ 43,9 cm/17.3"



1261 (*38) Dark Grey

1290 (*51) Denim

1388 (*04) Green



A blurred background showing a business meeting environment. In the foreground, a wooden desk holds a laptop, a blue notebook with a black pen, and several colorful markers. In the background, a whiteboard displays a faint flowchart or organizational chart. A solid blue rectangular overlay is positioned in the center of the image, containing the word 'BUSINESS' in white, bold, uppercase letters.

BUSINESS

AT WORK™

Discover our business collection AT Work, offering a professional look with a sportive and contemporary touch. The range features a complete assortment with different sized Laptop Bags, Laptop Backpacks and a Rolling Tote to be well prepared for the office or university. 5 new Laptop Backpacks have been added, offering you a broader variety in colour and style. Designed to be your ideal daily companion, AT Work offers multiple compartments to store documents, laptop, tablet and other accessories. Explore your creativity and think out of the box - AT Work!

- Padded laptop compartment and tablet slot
- Smart Sleeve on all Bags and Backpacks
- 5 new Laptop Backpacks 15.6" have been added in a special execution
- Padded and ergonomic shoulder straps





NEW

107602 (33G*008): LAPTOP BP 15.6" MELANGE
32 x 49,5 x 21 || 25.0 L - 0.7 KG
 ** 26 x 37,5 x 3,5
 *** 19 x 27 x 1,7
 25,7 cm/10.1" 39,6 cm/15.6"



2447 (*08) Cool Grey



NEW

107603 (33G*009): LAPTOP BP 15.6" SPORT
32 x 49,5 x 21 || 25.0 L - 0.7 KG
 ** 26 x 37,5 x 3,5
 *** 19 x 27 x 1,7
 25,7 cm/10.1" 39,6 cm/15.6"



4014 (*51) True Navy/Blueprint



NEW

107604 (33G*010): LAPTOP BP 15.6" MESH
32 x 49,5 x 21 || 25.0 L - 0.7 KG
 ** 26 x 37,5 x 3,5
 *** 19 x 27 x 1,7
 25,7 cm/10.1" 39,6 cm/15.6"



2480 (*19) Universe Black



NEW

107605 (33G*011): LAPTOP BP 15.6" PRINT
32 x 49,5 x 21 || 25.0 L - 0.7 KG
 ** 26 x 37,5 x 3,5
 *** 19 x 27 x 1,7
 25,7 cm/10.1" 39,6 cm/15.6"



2878 (*29) Black Print



NEW

107606 (33G*012): LAPTOP BP 15.6" COATED
32 x 49,5 x 21 || 25.0 L - 0.7 KG
 ** 26 x 37,5 x 3,5
 *** 19 x 27 x 1,7
 25,7 cm/10.1" 39,6 cm/15.6"



2379 (*18) Shadow Grey



88528 (33G*001): LAPT. BACKP. 13.3"-14.1"
30 x 45,5 x 20,5 || 20.5 L - 0.6 KG
 ** 24,1 x 34,3 x 3,3
 *** 19 x 27 x 1,7
 25,7 cm/10.1" 35,8 cm/14.1"



1041 (*09) Black



88531 (33G*004): LAPTOP BAG 13.3"-14.1"
39 x 30 x 10,5 || 10.0 L - 0.5 KG
 ** 34,3 x 24,1 x 3,3
 *** 27 x 19 x 1,7
 25,7 cm/10.1" 35,8 cm/14.1"



1041 (*09) Black



88533 (33G*006): ROLLING TOTE 15.6"
44 x 38 x 23 || 22.0 L - 2.5 KG
 ** 37,5 x 26 x 3,5
 *** 27 x 19 x 1,7
 25,7 cm/10.1" 39,6 cm/15.6"



1041 (*09) Black



88530 (33G*003): LAPTOP BACKPACK 17.3"
33.5 x 52.5 x 23.5 || 34.0 L - 0.7 KG
 ** 28,7 x 42,2 x 3,8
 *** 19 x 27 x 1,7
 25,7 cm/10.1" 43,9 cm/17.3"



1041 (*09) Black

88529 (33G*002): LAPTOP BACKPACK 15.6"
32 x 49,5 x 21 || 25.0 L - 0.6 KG
 ** 26 x 37,5 x 3,5
 *** 19 x 27 x 1,7
 25,7 cm/10.1" 39,6 cm/15.6"



1552 (*41) Midnight Navy

88532 (33G*005): LAPTOP BAG 15.6"
41,5 x 32 x 12 || 15.0 L - 0.5 KG
 ** 37,5 x 26 x 3,5
 *** 27 x 19 x 1,7
 25,7 cm/10.1" 39,6 cm/15.6"



1552 (*41) Midnight Navy

** Maximum laptop size
 *** Maximum tablet size

CITY DRIFT™

Ready to break the business routine? City Drift is the **American Tourister** business casual collection, which offers a contemporary design for young professionals using fresh colour accents and water-repellent coated polyester in an interesting fabric combination. The multiple Bags and Backpacks offer the essential features for maximum comfort, such as small organisation pockets and dedicated compartments for papers, laptop and tablet. Choose your model and work – play – enjoy our City Drift collection.


- Urban and casual design, ideal for office and leisure time
- Laptop compartment and tablet slot
- Multiple compartments for easy storage





80525 (28G*001): LAPT. BACKP. 13.3"-14.1"
29 x 40,5 x 20 || 20.0 L - 0.6 KG
 ** 24,1 x 34,3 x 3,3
 *** 19 x 27 x 1,7
 📏 25,7 cm/10.1" 📏 35,8 cm/14.1"



-  **1062 (*09)** Black/Grey
-  **2642 (*19)** Black/Blue



80527 (28G*002): LAPTOP BACKPACK 15.6"
31 x 44,5 x 23 || 24.0 L - 0.7 KG
 ** 26 x 37,5 x 3,5
 *** 19 x 27 x 1,7
 📏 25,7 cm/10.1" 📏 39,6 cm/15.6"



-  **1062 (*09)** Black/Grey
-  **2642 (*19)** Black/Blue



80529 (28G*003): LAPTOP BAG 13.3"-14.1"
41 x 31 x 8,5 || 10.0 L - 0.4 KG
 ** 34,3 x 24,1 x 3,3
 *** 27 x 19 x 1,7
 📏 25,7 cm/10.1" 📏 35,8 cm/14.1"



-  **1062 (*09)** Black/Grey
-  **2642 (*19)** Black/Blue



80531 (28G*004): LAPTOP BAG 15.6"
43 x 30 x 12,5 || 16.0 L - 0.6 KG
 ** 37,5 x 26 x 3,5
 *** 27 x 19 x 1,7
 📏 25,7 cm/10.1" 📏 39,6 cm/15.6"



-  **1062 (*09)** Black/Grey
-  **2642 (*19)** Black/Blue



80533 (28G*005): 3-WAY BOARDING BAG 15.6"
40 x 30 x 18 || 19.5 L - 0.8 KG
 ** 37,5 x 26 x 3,5
 *** 27 x 19 x 1,7
 📏 25,7 cm/10.1" 📏 39,6 cm/15.6"



-  **1062 (*09)** Black/Grey
-  **2642 (*19)** Black/Blue

AMERICAN TOURISTER WORLDWIDE

PRESENCE IN OVER 90 COUNTRIES WORLDWIDE



Out Of Home Campaign,
China



Out Of Home Campaign,
Australia



Antalya Pop Up, **Turkey**



Out Of Home Campaign,
Scandinavia



TV Commercial,
Spain, France and Italy



Out Of Home Campaign,
Germany



Westfield Shopping Mall, **UK**



Out Of Home Campaign,
Scandinavia



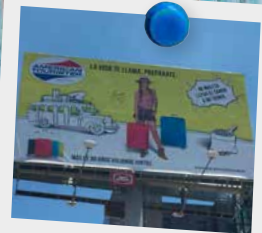
Out Of Home Campaign, **UK**



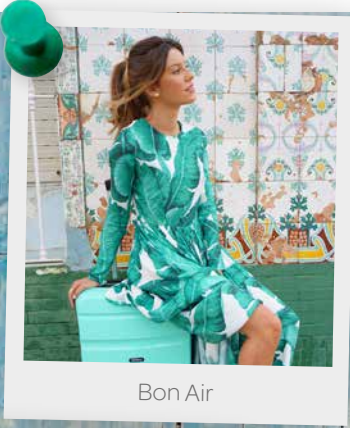
Pop-up, Afisha Music
Festival, **Moscow**



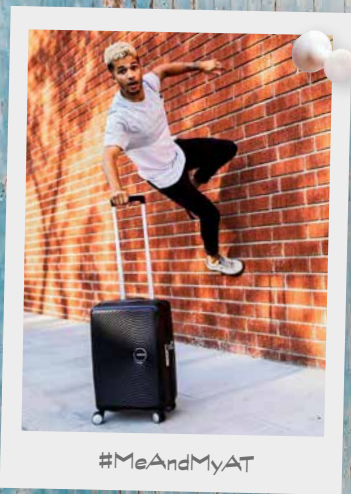
Soundbox Pop Up with DJ
at Selfridges, **UK**



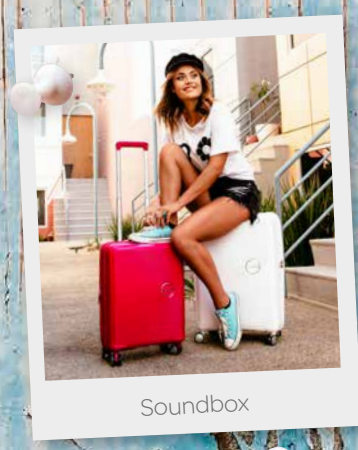
Out Of Home Campaign,
Mexico



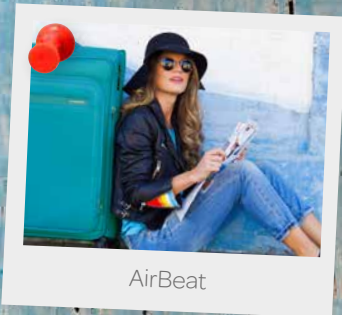
Bon Air



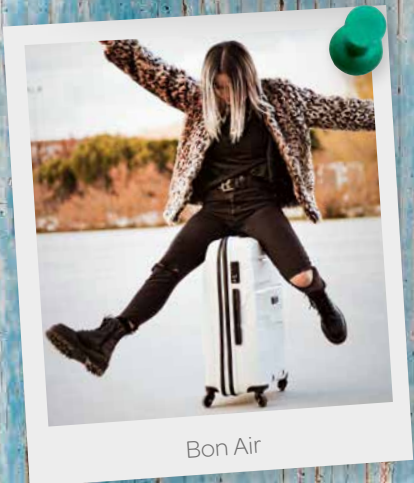
#MeAndMyAT



Soundbox



AirBeat



Bon Air



#MeAndMyAT



#MeAndMyAT



Soundbox



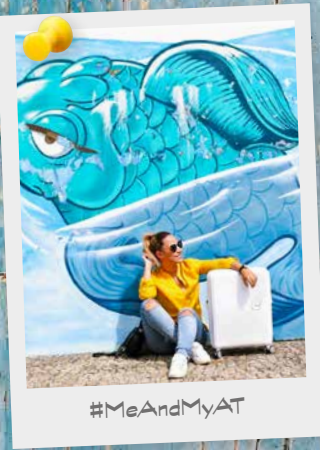
Bon Air



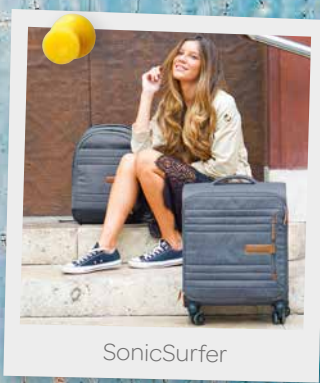
#MeAndMyAT



#MeAndMyAT



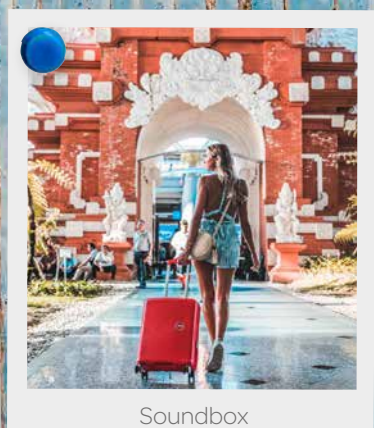
#MeAndMyAT



SonicSurfer



Soundbox



Soundbox



DISNEY



© Disney



© MARVEL



starwars.com

© &™ Lucasfilm Ltd.

WAVEBREAKER DISNEY™ - TEENS/ADULTS

The WaveBreaker Close-Up collection is a modern take on 2 iconic Disney characters: Mickey and Minnie. The joyful pastel dots together with Mickey and Minnie's cheerful peek-a-boo faces will surely brighten your day!

- Fixed 3-digit TSA Lock on Spinner 67 & 77
- Cross ribbons, zipped divider and apron pocket allow easy storing
- Colourful and modern Mickey and Minnie prints
- Textured surface protects against scratches



PVC
free



85667 (31C*001): SPINNER 55
40 x 55 x 20 || 36.0 L - 2.6 KG



85670 (31C*004): SPINNER 67
47 x 67 x 26 || 64.0 L - 3.6 KG



85673 (31C*007): SPINNER 77
52 x 77 x 29 || 96.0 L - 4.2 KG



85667 (31C*001): SPINNER 55
40 x 55 x 20 || 36.0 L - 2.6 KG



85670 (31C*004): SPINNER 67
47 x 67 x 26 || 64.0 L - 3.6 KG



85673 (31C*007): SPINNER 77
52 x 77 x 29 || 96.0 L - 4.2 KG



***02 NEW**
Minnie Close-Up
6977



***12 NEW**
Mickey Close-Up
6978

WAVEBREAKER DISNEY™ - TEENS/ADULTS

WaveBreaker Disney luggage is sure to make travelling to your destination worthwhile! The playful prints feature Donald Duck popping up from around the corner and Mickey Mouse on both sides. These Mickey and Donald Duck suitcases will guarantee that your journeys are unforgettable.

- Fixed 3-digit TSA Lock on Spinner 67 & 77
- Cross ribbons, zipped divider and apron pocket allow easy storing
- Playful, 360-degree Mickey and Donald prints on a classic comics-themed background
- Textured surface protects against scratches



DONALD & MICKEY COMICS RED 7321 31C

DISNEY

PVC free

NEW COLOUR



85667 (31C*001): SPINNER 55
40 x 55 x 20 || 36.0 L - 2.6 KG



85670 (31C*004): SPINNER 67
47 x 67 x 26 || 64.0 L - 3.6 KG



85673 (31C*007): SPINNER 77
52 x 77 x 29 || 96.0 L - 4.2 KG



85667 (31C*001): SPINNER 55
40 x 55 x 20 || 36.0 L - 2.6 KG




85670 (31C*004): SPINNER 67
47 x 67 x 26 || 64.0 L - 3.6 KG



85673 (31C*007): SPINNER 77
52 x 77 x 29 || 96.0 L - 4.2 KG



 *20 **NEW**
Mickey Comics Red
6976

 *01
Donald Duck
5278

Disney
© Disney

Disney
DONALD DUCK
Disney
MICKEY MOUSE
& Friends

WAVEBREAKER MARVEL™ - TEENS/ADULTS

Brace yourself for the upcoming movie *Avengers: Infinity War* coming out in April 2018 and embark on your own exciting superhero adventure with our new WaveBreaker MARVEL collection. No matter how many action-packed encounters, the suitcases' dotted texture will help to protect the surface against scratches. Travelling like Iron Man and Captain America has finally become a reality!

- Fixed 3-digit TSA Lock on Spinner 67 & 77
- Cross ribbons, zipped divider and apron pocket allow easy storing
- Trendy prints
- Textured surface protects against scratches



CAPTAIN AMERICA & IRON MAN 7321 31C

NEW COLOURS

DISNEY

PVC free

POS



85668 (31C*002): SPINNER 55
40 x 55 x 20 || 36.0 L - 2.6 KG



85671 (31C*005): SPINNER 67
47 x 67 x 26 || 64.0 L - 3.6 KG



85687 (31C*008): SPINNER 77
52 x 77 x 29 || 96.0 L - 4.2 KG



85668 (31C*002): SPINNER 55
40 x 55 x 20 || 36.0 L - 2.6 KG



85671 (31C*005): SPINNER 67
47 x 67 x 26 || 64.0 L - 3.6 KG



85687 (31C*008): SPINNER 77
52 x 77 x 29 || 96.0 L - 4.2 KG



*22 NEW
Captain America Close-Up
6979



*30 NEW
Iron Man Close-Up
6980

MARVEL
© MARVEL

WAVEBREAKER STAR WARS™ - TEENS/ADULTS

Whether travelling to outer space or just down the street, our WaveBreaker Star Wars suitcases have everything covered. With a textured shell that provides plenty of protection and secure packing space, the most popular droid R2D2 and the iconic Stormtrooper are the perfect travel companions for Star Wars fans.

- Cross ribbons, zipped divider and apron pocket allow easy storing
- Fixed 3-digit TSA Lock on Spinner 67 & 77
- Stylish close-up print
- Textured surface protects against scratches



R2D2 & STORMTROOPER 7321 31C

DISNEY

PVC free



85669 (31C*003): SPINNER 55
40 x 55 x 20 || 36.0 L - 2.6 KG



85672 (31C*006): SPINNER 67
47 x 67 x 26 || 64.0 L - 3.6 KG



85688 (31C*009): SPINNER 77
52 x 77 x 29 || 96.0 L - 4.2 KG



85669 (31C*003): SPINNER 55
40 x 55 x 20 || 36.0 L - 2.6 KG



85672 (31C*006): SPINNER 67
47 x 67 x 26 || 64.0 L - 3.6 KG



85688 (31C*009): SPINNER 77
52 x 77 x 29 || 96.0 L - 4.2 KG



*05
Star Wars R2D2
4431



*15
Star Wars Storm Trooper
4608

STAR WARS
starwars.com
© &™ Lucasfilm Ltd.

LEGENDS DISNEY™ - TEENS/ADULTS

The Legends Disney collection unites brightly coloured Disney designs with quality luggage you can rely on. Our 2 new prints, Mickey Kiss and Minnie Kiss, are an ideal His & Hers set for those who love Disney.

- 3-digit combination lock
- Beautiful print with shiny finishing
- Matching colour lining



PVC free



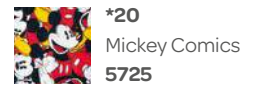
92699 (19C*019): SPINNER 55 ALFATWIST 2.0
40 x 55 x 20 || 36.0 L - 2.6 KG



64479 (19C*007): SPINNER 65 ALFATWIST
45,5 x 65 x 27,5 || 62.5 L - 3.4 KG



64480 (19C*008): SPINNER 75 ALFATWIST
52,5 x 75 x 31 || 88.0 L - 4.3 KG



LEGENDS STAR WARS™ - TEENS/ADULTS 3496 22C

NEW COLOUR

Ready for your next space quest? Travel to galaxies far, far away with this new *Star Wars* Neon hardside suitcase. May the force be with you!

- 3-digit combination lock
- Shiny finishing
- Matching colour lining

PVC free



93045 (22C*011): SPINNER 55 JOYTWIST
40 x 55 x 20 || 36.0 L - 2.6 KG



93046 (22C*012): SPINNER 65 JOYTWIST
45,5 x 65 x 27 || 62.5 L - 3.4 KG



93047 (22C*013): SPINNER 75 JOYTWIST
52,5 x 75 x 31 || 88.0 L - 4.3 KG



*29 **NEW**

Star Wars Neon
6973

STAR WARS

starwars.com
© &™ Lucasfilm Ltd.

LEGENDS MARVEL™ - TEENS/ADULTS 3451 21C

DISNEY

Our Legends MARVEL Comics collection features a vibrant vintage print, which makes it perfect for MARVEL enthusiasts. Channel your inner Avenger and take off!

- 3-digit combination lock
- Matching colour lining
- Vintage comics approach

PVC free



92690 (21C*014): SPINNER 55 ALFATWIST 2.0
40 x 55 x 20 || 36.0 L - 2.6 KG



64492 (21C*007): SPINNER 65
45,5 x 65 x 27,5 || 62.5 L - 3.4 KG



64493 (21C*008): SPINNER 75
52,5 x 75 x 31 || 88.0 L - 4.3 KG



*10
MARVEL Comics
4528

MARVEL
© MARVEL

GRAB'N'GO™ - TEENS/ADULTS 7976 35C

Grab'n'Go Disney is our affordable **American Tourister** backpack collection, ideal for *Star Wars* fans looking for the best deal in luggage. The red colour-block details and the cool geometric design give the backpack a young and trendy look. The items are extremely light, making them perfect for daily use!

- Padded shoulder straps provide maximum carrying comfort
- Lightweight
- Multiple compartments
- Affordable backpacks

PVC free



91636 (35C*003): TOILET KIT
27 x 24,5 x 9 || 7.0 L - 0.3 KG



91633 (35C*001): BACKPACK S
27 x 44 x 20 || 21.5 L - 0.3 KG
*** 19 x 27 x 1,7
☞ 25,7 cm/10.1"



91634 (35C*002): LAPT. BACKPACK 15.6"
30 x 46 x 25 || 27.0 L - 0.6 KG
** 26 x 37,5 x 3,5
*** 19 x 27 x 1,7
☞ 25,7 cm/10.1" ☞ 39,6 cm/15.6"
☞ ☞



91638 (35C*004): BACKPACK/DUFFLE
54 x 32,5 x 27,5 || 49.0 L - 0.6 KG
☞

** Maximum laptop size
*** Maximum tablet size



***09**
Darth Vader Geometric
6479



***05**
Stormtrooper Geometric
6480

STAR WARS
starwars.com
© &™ Lucasfilm Ltd.

NEW WONDER STORMTROOPER™ - KIDS 6462 27C

DISNEY

The *Star Wars* Stormtrooper collection is our latest addition to the New Wonder assortment designed especially for kids. The affordable, lightweight backpacks & luggage are now space-proof thanks to our Stormtrooper print!

- Geometric print and spaceship background
- S-shaped shoulder straps on all backpacks which prevent them from slipping off
- Sternum strap

PVC
free



72618 (27C*018): TOILET KIT JR.
23 x 14 x 11 || 3.5 L - 0.1 KG



72608 (27C*014): BACKPACK S+ JR.
24 x 35 x 17 || 11.0 L - 0.2 KG



72610 (27C*015): BACKPACK M
28 x 41 x 20 || 21.0 L - 0.3 KG



103333 (27C*036): HARD UPR. 55
35,5 x 55 x 24 || 32.5 L - 2.5 KG



*18
Star Wars Storm Trooper
4608

**STAR
WARS**
starwars.com
© &™ Lucasfilm Ltd.

NEW WONDER CARS 3™ - KIDS 6462 27C

NEW

Lightning McQueen is the ultimate star of our New Wonder collection featuring Cars 3. The backpacks and luggage have sturdy handles and straps which makes grabbing them as easy as ready-set-go!

- Detailed race-track print and speedometer close-up
- S-shaped shoulder straps on all backpacks which prevent them from slipping off
- Sternum strap
- ID tag

PVC free



73451 (27C*028): TOILET KIT PRE-S DISNEY
23,5 x 12,5 x 7,5 || 2.0 L - 0.1 KG



73446 (27C*023): BACKPACK S DISNEY
23,5 x 28,5 x 14 || 7.0 L - 0.2 KG



73438 (27C*022): BACKPACK S+ PRE-S DISNEY
26 x 38 x 20 || 16.0 L - 0.2 KG



73436 (27C*020): HARD UPR. 45 DISNEY
31 x 45 x 24 || 20.0 L - 1.5 KG



*08
Cars 3
6044

Disney
© Disney

NEW WONDER MINNIE BOW™ - KIDS 6462 27C

NEW

DISNEY

The most adorable Disney character, Minnie Mouse, steals the show with her polka dot dress and bashful smile. Our New Wonder Minnie Bow collection features a cute 3D bow as a perfect finishing touch to a lovely floral print.

- Adorable Minnie design with a 3D bow
- S-shaped shoulder straps on all backpacks which prevent them from slipping off
- Sternum strap
- ID tag

PVC free



73451 (27C*028): TOILET KIT PRE-S DISNEY
23,5 x 12,5 x 7,5 || 2.0 L - 0.1 KG



73446 (27C*023): BACKPACK S DISNEY
23,5 x 28,5 x 14 || 7.0 L - 0.2 KG



73438 (27C*022): BACKPACK S+ PRE-S DISNEY
26 x 38 x 20 || 16.0 L - 0.2 KG



73436 (27C*020): HARD UPR. 45 DISNEY
31 x 45 x 24 || 20.0 L - 1.5 KG



*80
Minnie Bow
5424

Disney
© Disney

Disney
**MICKEY
MOUSE**
& Friends

NEW WONDER SPIDER-MAN WEB™ - KIDS 6462 27C

NEW

Discover a thrilling premium range of luggage for kids with the New Wonder collection featuring Spider-Man. The amazing superhero is caught in action on our PVC-free backpacks, school bags, luggage, wheeled bags and school items for kids.

- Cool spider detail patch
- S-shaped shoulder straps on all backpacks which prevent them from slipping off
- Sternum strap
- ID tag

PVC free



86890 (27C*035): TOILET KIT JR. MARVEL
24 x 14 x 10,5 || 3.5 L - 0.1 KG



86889 (27C*034): BACKPACK S MARVEL
22,5 x 28,5 x 11 || 5.5 L - 0.2 KG



86888 (27C*033): BACKPACK S+ JR. MARVEL
24 x 36,5 x 16 || 12.0 L - 0.3 KG



86887 (27C*032): HARD UPR. 55 MARVEL
35,5 x 55 x 24 || 32.5 L - 2.5 KG



*31
Spider-Man Web
6045

MARVEL
© MARVEL



POINT OF SALE MATERIAL

BON AIR POS 2018

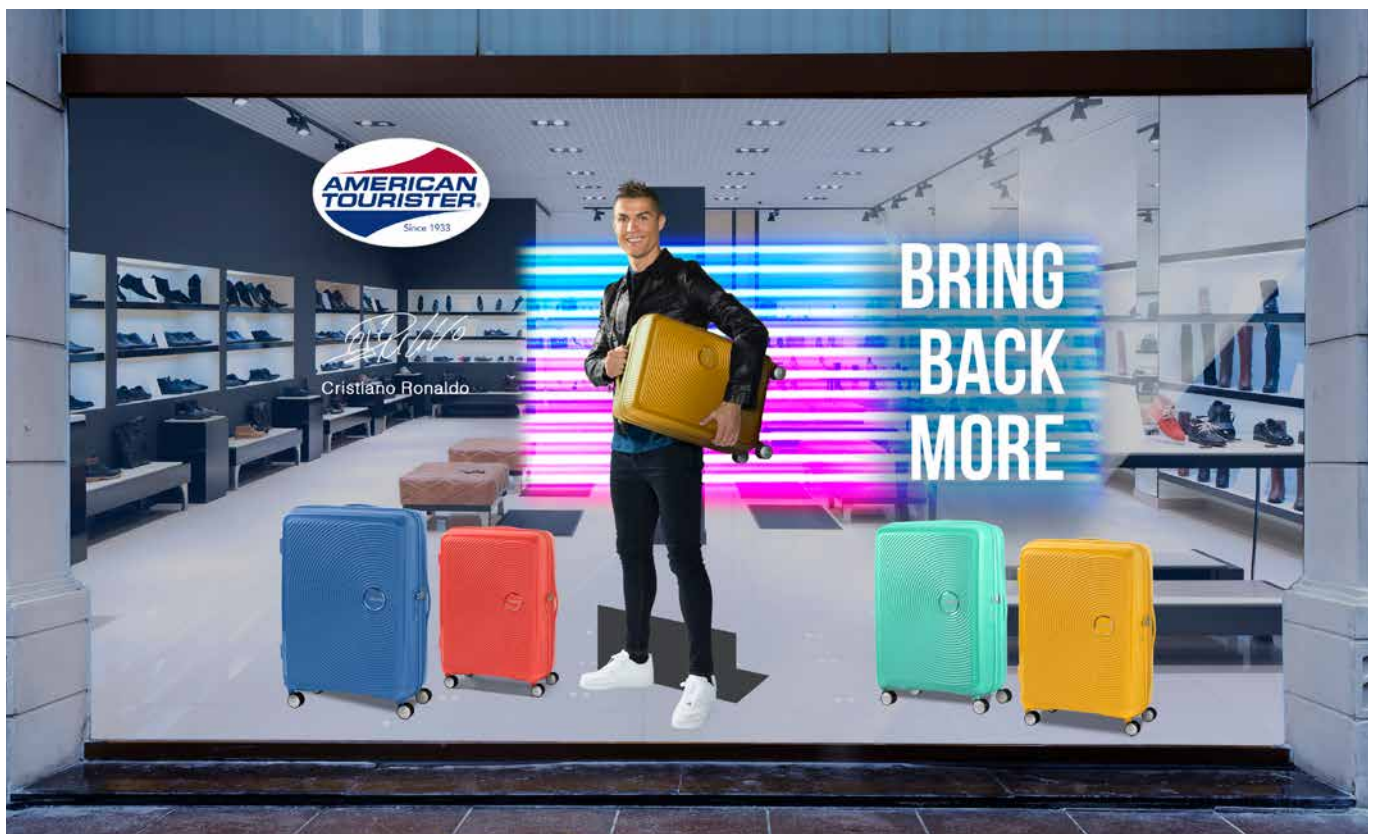


Vertical Banner
(60 x 120 cm)



Counter Card
(41,3 x 42 cm)

BRING BACK MORE CAMPAIGN



CABIN AIRLINE DIMENSIONS

MAXIMUM EXTERNAL DIMENSIONS AND WEIGHT ALLOWED IN ECONOMY CLASS

AIRLINE	AIRLINE	MAX. DIMENSIONS	MAX. WEIGHT
	Aegean Airlines	56 x 45 x 25 cm	8 kg
	Aer Lingus	55 x 40 x 24 cm	10 kg
	Aeroflot	55 x 40 x 20 cm (max. 115 cm)	10 kg
	Aerolineas Argentinas	55 x 35 x 25 cm (max. 115 cm)	10 kg
	Aeromexico	56 x 36 x 23 cm (max. 115 cm)	10 kg
	Air Berlin	55 x 40 x 23 cm	8 kg
	Air Canada	55 x 40 x 23 cm	
	Air Caraïbes	55 x 40 x 20 cm (max. 115 cm)	12 kg
	Air Europa	55 x 35 x 25 cm (max. 115 cm)	10 kg
	Air France	55 x 35 x 25 cm	12 kg
	Air India	55 x 35 x 25 cm (max. 115 cm)	8 kg
	Air New Zealand	max. 118 cm	7 kg
	Air Transat	51 x 40 x 23 cm	10 kg
	Alitalia	55 x 35 x 25 cm	8 kg
	All Nippon Airways	55 x 40 x 25 cm (max. 115 cm)	10 kg
	American Airlines	56 x 36 x 23 cm	
	Arkia	55 x 40 x 20 cm	7 kg
	Asiana Airlines	55 x 40 x 20 cm (max. 115 cm)	10 kg
	Austrian Airlines	55 x 40 x 23 cm	8 kg

AIRLINE	AIRLINE	MAX. DIMENSIONS	MAX. WEIGHT
	BMI Regional	55 x 40 x 23 cm	12 kg
	British Airways	56 x 45 x 25 cm	23 kg
	Brussels Airlines	55 x 40 x 23 cm	12 kg
	Cathay Pacific	56 x 36 x 23 cm	7 kg
	Cebu Pacific	56 x 36 x 23 cm	7 kg
	China Airlines	56 x 36 x 23 cm	7 kg
	CityJet	55 x 35 x 35 cm	12 kg
	Condor	55 x 40 x 20 cm	6 kg
	Corsair	55 x 40 x 20 cm (max. 115 cm)	12 kg
	Czech Airlines	55 x 45 x 25 cm	8 kg
	Delta Air Lines	56 x 35 x 23 cm (max. 114 cm)	
	easy Jet	56 x 45 x 25 cm	
	El-AL Israel Airlines	56 x 45 x 25 cm (max. 115 cm)	8 kg
	Emirates	55 x 38 x 20 cm	7 kg
	Ethiopian Airlines	55 x 40 x 23 cm	7 kg
	Etihad Airways	50 x 40 x 25 cm (max. 115 cm)	7 kg
	Finnair	56 x 45 x 25 cm	10 kg
	Flybe	55 x 35 x 20 cm	10 kg
	Germania	55 x 40 x 20 cm	6 kg

	AIRLINE	MAX. DIMENSIONS	MAX. WEIGHT
	Eurowings	55 x 40 x 23 cm	8 kg
	HOP!	55 x 35 x 25 cm (max. 115 cm)	12 kg
	Iberia	56 x 45 x 25 cm	
	Israir Airlines	50 x 40 x 20 cm	8 kg
	Japan Airlines	55 x 40 x 25 cm (max. 115 cm)	10 kg
	Jet Airways	55 x 35 x 25 cm (max. 115 cm)	7 kg
	Jet2	56 x 45 x 25 cm	10 kg
	KLM	55 x 35 x 25 cm	12 kg
	Korean Air	55 x 40 x 20 cm (max. 115 cm)	12 kg
	LATAM Airlines	55 x 35 x 25 cm	8 kg
	LOT	55 x 40 x 23 cm	8 kg
	Lufthansa	55 x 40 x 23 cm	8 kg
	Malaysia Airlines	55 x 35 x 25 cm (max. 115 cm)	7 kg
	Norwegian	55 x 40 x 23 cm	10 kg
	Olympic Air	55 x 40 x 23 cm	8 kg
	Philippine Airlines	max. 115 cm	7 kg
	Qantas	56 x 36 x 23 cm (max. 115 cm)	7 kg
	Qatar Airways	50 x 37 x 25 cm	7 kg
	Ryanair	55 x 40 x 20 cm	10 kg

	AIRLINE	MAX. DIMENSIONS	MAX. WEIGHT
	Scandinavian Airlines	55 x 40 x 23 cm	8 kg
	Singapore Airlines	max. 115 cm	7 kg
	South African Airways	56 x 36 x 23 cm	8 kg
	Swiss International Airlines	55 x 40 x 23 cm	8 kg
	Tap Portugal	55 x 40 x 20 cm (max. 115 cm)	8 kg
	Thai Airways	56 x 45 x 25 cm	7 kg
	Thomas Cook Airlines	55 x 40 x 20 cm	6 kg
	Transavia	45 x 40 x 25 cm	10 kg
	TUfly	55 x 40 x 20 cm	6 kg
	Tunisair	max. 115 cm	8 kg
	Turkish Airlines	55 x 40 x 23 cm	8 kg
	United Airlines	56 x 35 x 22 cm (max. 114 cm)	
	Vietnam Airlines	56 x 36 x 23 cm (max. 115 cm)	7 kg
	Virgin Atlantic	56 x 36 x 23 cm	10 kg
	Vueling	55 x 40 x 20 cm	10 kg
	Wizz Air	55 x 40 x 23 cm	10 kg
	XL Airways	55 x 35 x 25 cm	5 kg

We cannot be held responsible if an airline applies other cabin size standards.

AMERICAN TOURISTER SHOP IN THE SHOP



DISPLAYS



Backpack Display
(66,5 x 160 x 106 cm)



Cabin Size Display
(45 x 120 x 30,8 cm)

GENERAL INFO

PRODUCT CODES

All **American Tourister** product codes appear as follows:

For example: **Lock'n'Roll Spinner 69 - Skydiver Blue**

66983 | 2608

MODEL CODE:

Lock'n'Roll Spinner 69

COLOUR CODE:

Skydiver Blue

(06G | *11 | 001)

PRODUCT LINE CODE:

Lock'n'Roll

COLOUR CODE:

Skydiver Blue

MODEL CODE:

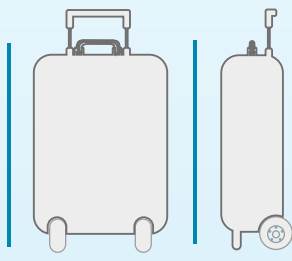
Spinner 69

SAP PRODUCT CODE

FORMER PRODUCT CODE

DIMENSIONS

L x H x W



The dimensions shown in the tables are the outside dimensions including handles, wheels, bottom glides, side pockets and other external components. Measurements of volume, dimensions and weight are carried out in the **American Tourister** laboratories using procedures whereby tolerances up to 1.5 cm in dimensions and 5% in weight and volume cannot be excluded.

American Tourister reserves the right to amend the specifications, colours, dimensions and weight of any product without prior warning. Colour deviation may occur due to the printing technique used.

QUALITY TESTS



Tumble test



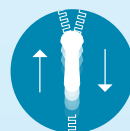
Handle test



Drop test



Wheel test



Zipper test



Locks test

We deliver the quality. You conduct the test. Each journey. Each day. You might not have given it any thought, but each **American Tourister** product undergoes the most stringent controls and tests before it goes on the market. Of course, the ultimate test is conducted by you, the consumer.

SYMBOLS



Key lock with TSA function



Combination lock



Combi lock with TSA function



Combi padlock with TSA function



Internal organisation



Bottle holder



ID tag



Reflective detail



Removable shoulder strap



Anti-slip shoulder strap



Ergonomic straps



Sternum strap



Smart Sleeve/Smart Pocket which quickly slips over the handle of an Upright/Spinner case



Expandable



Bottom grip



Integrated wheels



With laptop compartment



Adaptable laptop compartment



With tablet compartment



Divider pad



Bayonet closing



Smart Fix buckle



Cross ribbons



M ribbons



Pocket for shoes & laundry



Rain cover



Wet pocket



Removable bag/pocket



Accessory/cable pouch



Hanging loop/hook



Elastic loops



Cabin baggage that can be taken on board an aircraft with most airlines.

Please always check with your airline before departure which cabin size restrictions apply on size and weight.

#MEANDMYAT



WWW.AMERICANTOURISTER.EU



[AMTOURISTER_EU](https://www.instagram.com/AMTOURISTER_EU)



[ATOURISTEREU](https://www.pinterest.com/ATOURISTEREU)



[AMTOURISTEREU](https://twitter.com/AMTOURISTEREU)



[AMERICANTOURISTER.EU](https://www.facebook.com/AMERICANTOURISTER.EU)



[AMERICANTOURISTEREU](https://www.youtube.com/AMERICANTOURISTEREU)



